



Index of Brochures

1. Split-Core AC Current Sensor SCT-0400
2. Revenue Grade AC Current Sensor SCT-075R
3. Split-Core AC Current Sensor SCT-0750
4. Split-Core AC Current Sensor SCT-1250
5. Split-Core AC Current Sensor SCT-2000
6. Split-Core AC Current Sensor SCT-3000
7. Solid-Core AC Current Sensor UCT-0300
8. Solid-Core AC Current Sensor UCT-0500
9. Solid-Core AC Current Sensor UCT-0750
10. Solid-Core AC Current Sensor UCT-1000
11. Solid-Core AC Current Sensor UCT-1250
12. Three-Phase 4-20mA RopeCT® AC Current Sensor Coil MGS-1800
13. RopeCT® AC Current Sensor Rogowski Coil RCT-1800
14. Three-Phase RopeCT® AC Current Sensor Rogowski Coil RCS-1800
15. DC Voltage Transducer
16. Potential Voltage Current Transformers SPT-0375
17. Split-core 4-20 mA Current Transducer
18. 4 - 20 mA Current Transducer
19. AC Current Output Transformer MGC-1000 Series
20. AC Current Output Transformer CCT-1200 Series
21. AC Split-Core Current Output Transformer MAG-J24C005
22. AC Split-Core Current Output Transformer ICT-2000 Series
23. AC Split-Core Current Output Transformer MAG-J36C005
24. High Frequency Current Transformers (CT)
25. High Isolation Medical Testing Transformer(custom made)
26. 73uH High-Isolation Signal Transformer(custom made)
27. 88uH High Isolation Signal Transformer(Custom amde)
28. 81.67uH High Isolation Signal Transformer(Custom made)
29. Common Mode Choke(Custom made)
30. 240V Power Transformer(Custom made)

Split-Core AC Current Sensor SCT-0400

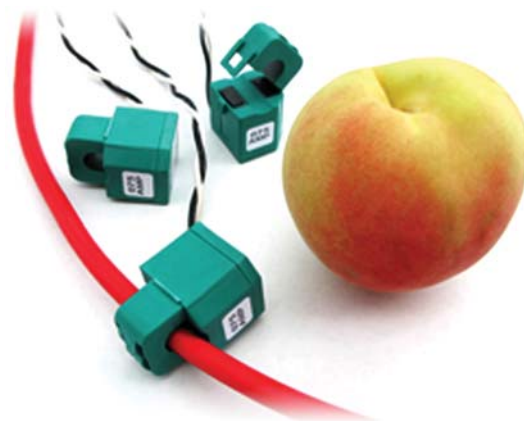
0.40" Opening With Ratings Up To 75 Amps

Description:

Magnelab's SCT-0400 Series split-core current sensors "sense" AC current up to 75 Amps passing through the center conductor. Split-core transformers are ideal for installation on existing electrical wiring by snapping around the conductor. The SCT series have a self-locking mechanism guaranteed for 500 opening-closing cycles. Custom outputs and other parameters are available at customer request.

Features:

- Rated input up to 75 Amp
- Output 0.333 Volt AC at rated current
- Linearity accuracy $\pm 1\%$
- Accuracy at 10% to 130% of rated current
- Phase angle < 2 degrees (valid for 20A or higher)

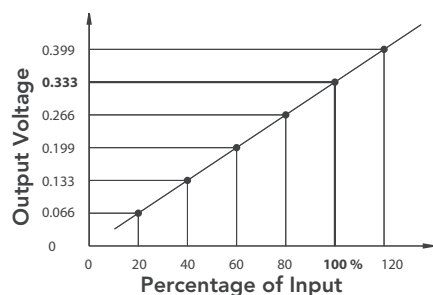


- Operates from 50 Hz to 1,000 Hz
- 8 ft. twisted-pair lead
- Maximum Voltage: 600 V (on bare conductor)
- Hinge guaranteed for 500 opening-closing cycles.
- UL Recognized, CE, and RoHS compliant

PART NUMBER AND RATING

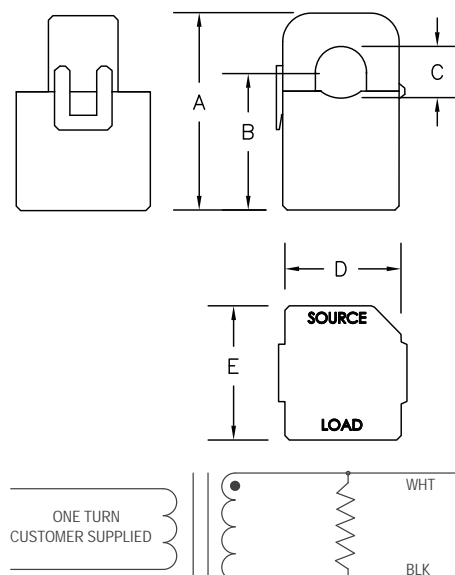
PART NUMBER	RATING
SCT-0400-000	No Burden Resistor*
SCT-0400-005	5 Amp
SCT-0400-010	10 Amp
SCT-0400-015	15 Amp
SCT-0400-020	20 Amp
SCT-0400-025	25 Amp
SCT-0400-030	30 Amp
SCT-0400-040	40 Amp
SCT-0400-050	50 Amp
SCT-0400-060	60 Amp
SCT-0400-075	75 Amp

* Zener diode limits the output voltage to 22 V



CE RoHS  ISO 9100:2000

DIMENSION	INCH	MM
A	1.560	39.62
B	1.000	25.40
C	0.400	10.16
D	1.000	25.40
E	1.000	25.40



Revenue Grade Split-Core AC Current Sensor SCT-075R

0.79" Opening with Ratings Up to 250 Amps

Description:

Magnelab's SCT-075R Series Current Sensors meets ANSI C57.13 revenue grade accuracy class 0.6 with unprecedented linearity and superior phase angle up to 250 Amps passing through the center conductor. Split-core transformer are ideal for installation on existing electrical wiring by snapping around the conductor. The SCT Series have a self-locking mechanism.

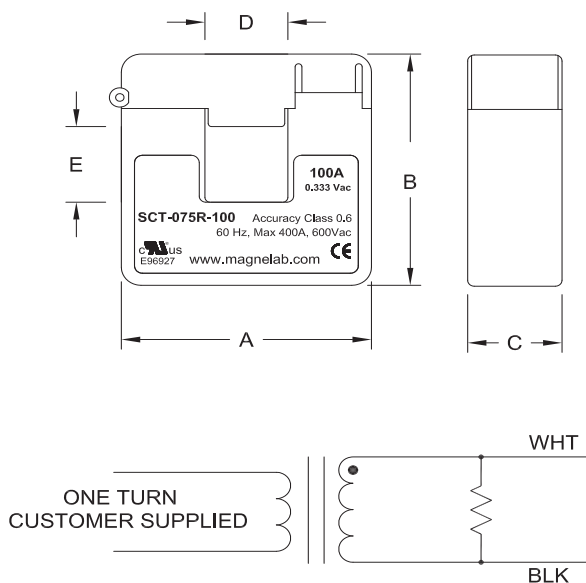
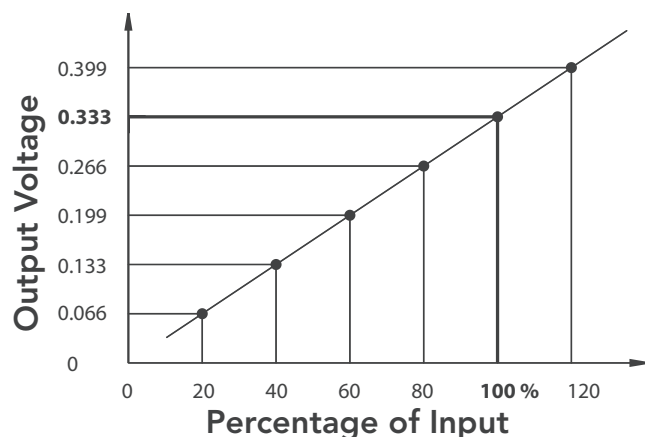


Features:

- Rated input up to 250 Amps
- Output of 0.333 Volt at rated current
- Linearity accuracy $\pm 0.5\%$
- Accuracy at 10% to 120% of rated current
- Phase angle 0.25°
- 8 ft. twisted-pair lead
- Maximum Voltage: 600 V (on bare conductor)
- UL recognized, CE, and RoHS compliant
- Other parameters are available at customer request.

PART NUMBER AND RATING	
Model Number	Part Number
SCT-075R-050	4379-607
SCT-075R-100	4379-610
SCT-075R-200	4379-611
SCT-075R-250	4379-612

DIMENSION	INCH	MM
A	2.400	61.0
B	2.400	61.0
C	0.900	23.0
D	0.790	20.0
E	0.790	20.0



Split-Core AC Current Sensor SCT-0750

0.75" Opening With Ratings Up To 200 Amps

Description:

Magnelab's SCT-0750 Series split-core current sensors "sense" AC current up to 200 Amps passing through the center conductor. Split-core transformers are ideal for installation on existing electrical wiring by snapping around the conductor. The SCT series have a self-locking mechanism. Custom outputs and other parameters are available at customer request.

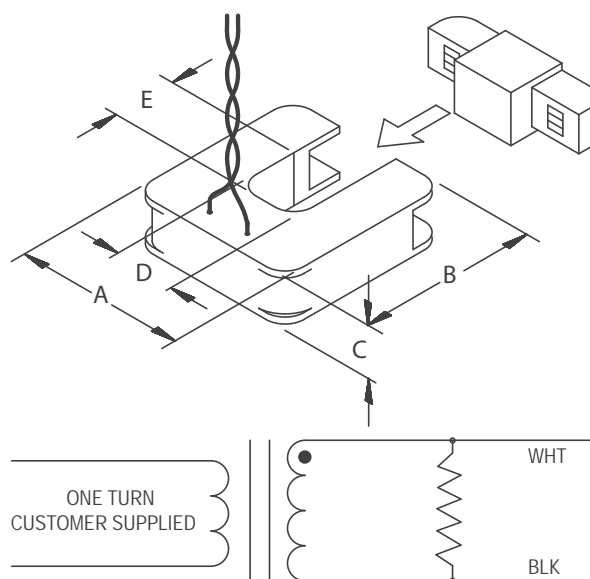
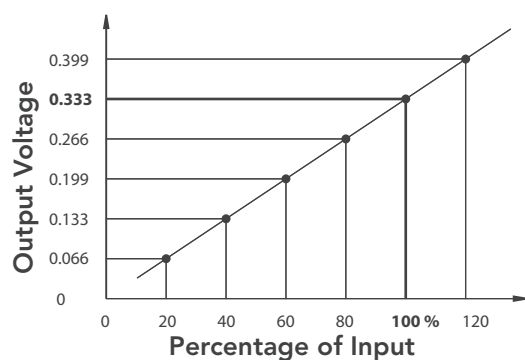
Features:

- Rated input up to 200 Amp
- Output of 0.333 Volt at rated current
- Linearity accuracy $\pm 1\%$
- Accuracy at 10% to 130% of rated current
- Phase angle < 2 degrees (valid for 70A or higher)
- Operates from 30 Hz to 1,000 Hz
- 8 ft. twisted-pair lead
- Maximum Voltage: 600 V (on bare conductor)
- UL recognized, CE, and RoHS compliant



PART NUMBER AND RATING	
SCT-0750-000	No Burden Resistor*
SCT-0750-005	5 Amp
SCT-0750-010	10 Amp
SCT-0750-020	20 Amp
SCT-0750-030	30 Amp
SCT-0750-050	50 Amp
SCT-0750-070	70 Amp
SCT-0750-100	100 Amp
SCT-0750-150	150 Amp
SCT-0750-200	200 Amp
* Zener diode limits the output voltage to 22 V	

DIMENSION	INCH	MM
A	2.000	50.80
B	2.100	53.34
C	0.610	15.49
D	0.750	19.05
E	0.750	19.05



Split-Core AC Current Sensor SCT-1250

1.25" Opening With Ratings Up To 600 Amps

Description:

Magnelab's SCT-1250 Series split-core current sensors "sense" AC current up to 600 Amps passing through the center conductor. Split-core transformers are ideal for installation on existing electrical wiring by snapping around the conductor. The SCT series have a self-locking mechanism. Custom outputs and other parameters available at customer request.

Features:

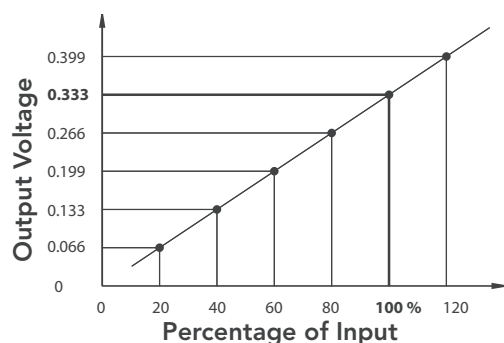
- Rated input up to 600 Amps
- Output of 0.333 Volt at rated current
- Linearity accuracy $\pm 1\%$
- Accuracy at 10% to 130% of rated current
- Phase angle < 2 degrees measured at rated current
- Operates from 50 Hz to 400 Hz
- 8 ft. twisted-pair lead
- Maximum Voltage: 600 V (on bare conductor)
- UL recognized, CE, and RoHS compliant



PART NUMBER AND RATING

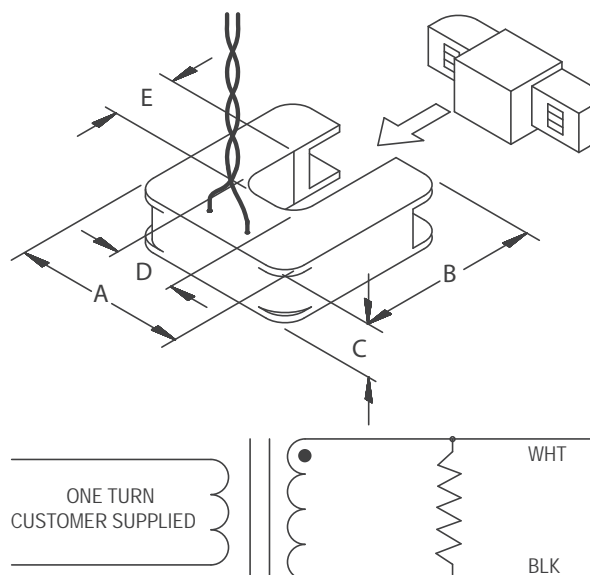
PART NUMBER AND RATING	
SCT-1250-000	No Burden Resistor*
SCT-1250-050	50 Amp
SCT-1250-100	100 Amp
SCT-1250-150	150 Amp
SCT-1250-200	200 Amp
SCT-1250-250	250 Amp
SCT-1250-300	300 Amp
SCT-1250-400	400 Amp
SCT-1250-600	600 Amp

* Zener diode limits the output voltage to 22 V



DIMENSION INCH MM

DIMENSION	INCH	MM
A	3.250	82.55
B	3.350	85.09
C	1.000	25.40
D	1.250	31.75
E	1.250	31.75



Split-Core AC Current Sensor SCT-2000

2.00" Opening With Ratings Up To 1500 Amps

Description:

Magnelab's SCT-2000 Series split-core current sensors "sense" AC current up to 1500 Amps passing through the center conductor. Split-core transformers are ideal for installation on existing electrical wiring by snapping around the conductor. The SCT series have a self-locking mechanism. Custom outputs and other parameters available at customer request.

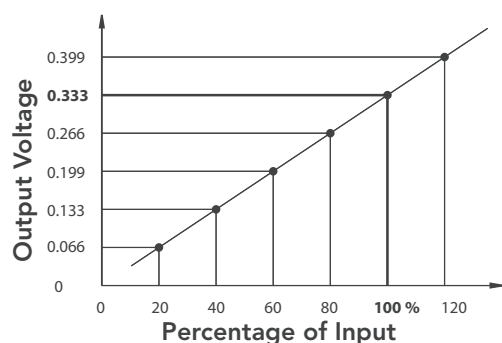
Features:

- Rated input up to 1500 Amp
- Output of 0.333 Volt at rated current
- Linearity accuracy $\pm 1\%$
- Accuracy at 10% to 130% of rated current
- Phase angle < 2 degrees measured at 50% rated current
- Operates from 50 Hz to 400 Hz
- 8 ft. twisted-pair lead
- Maximum Voltage: 600 V (on bare conductor)
- UL recognized, CE, and RoHS compliant

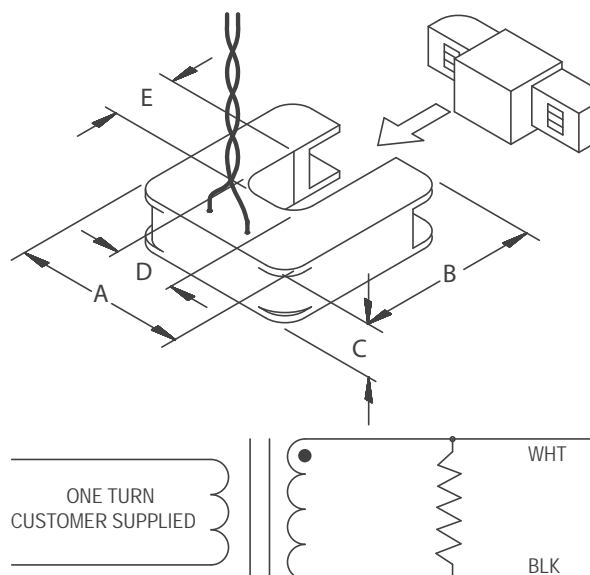


PART NUMBER AND RATING	
SCT-2000-000	No Burden Resistor*
SCT-2000-100	100 Amp
SCT-2000-200	200 Amp
SCT-2000-400	400 Amp
SCT-2000-600	600 Amp
SCT-2000-800	800 Amp
SCT-2000-1000	1000 Amp
SCT-2000-1200	1200 Amp
SCT-2000-1500	1500 Amp

* Zener diode limits the output voltage to 22 V



DIMENSION	INCH	MM
A	4.750	120.65
B	5.000	127.00
C	1.200	30.48
D	2.000	50.80
E	2.000	50.80



Split-Core AC Current Sensor SCT-3000

3.00" Opening With Ratings Up To 3000 Amps

Description:

Magnelab's SCT-3000 Series split-core current sensors "sense" AC current up to 3000 Amps passing through the center conductor. Split-core transformers are ideal for installation on existing electrical wiring by snapping around the conductor. The SCT series have a self-locking mechanism. Custom outputs and other parameters are available at customer request.

Features:

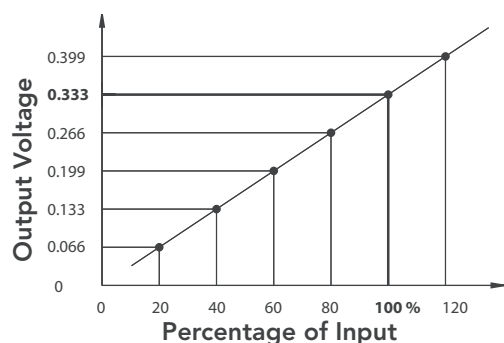
- Rated input up to 3000 Amp
- Output of 0.333 Volt at rated current
- Linearity accuracy $\pm 1\%$
- Accuracy at 10% to 130% of rated current
- Phase angle < 2 degrees measured at 50% rated current
- Operates from 50 Hz to 400 Hz
- 8 ft. twisted-pair lead
- Maximum Voltage: 600 V (on bare conductor)
- UL recognized, CE, and RoHS compliant



PART NUMBER AND RATING

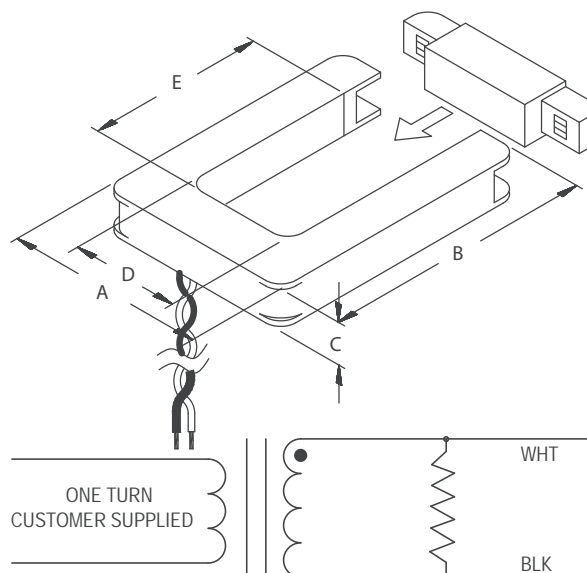
SCT-3000-000	No Burden Resistor*
SCT-3000-400	400 Amp
SCT-3000-600	600 Amp
SCT-3000-800	800 Amp
SCT-3000-1000	1000 Amp
SCT-3000-1200	1200 Amp
SCT-3000-1500	1500 Amp
SCT-3000-2000	2000 Amp
SCT-3000-3000	3000 Amp

* Zener diode limits the output voltage to 22 V



DIMENSION INCH MM

A	5.750	146.05
B	7.500	190.50
C	1.200	30.48
D	3.000	76.20
E	5.000	127.00



Solid-Core AC Current Sensor UCT-0300

0.30 Inch Opening With Ratings Up To 30 Amps

Description:

Magnelab UCT-0300 Series are better than one percent accuracy and less than one degree phase angle. Output is controlled by a precision resistor fixed at the industry standard of 0.333 Volt AC. The rugged epoxy encapsulated construction comes with eight feet twisted-leads. Custom outputs and other parameters are available at customer request.

Features:

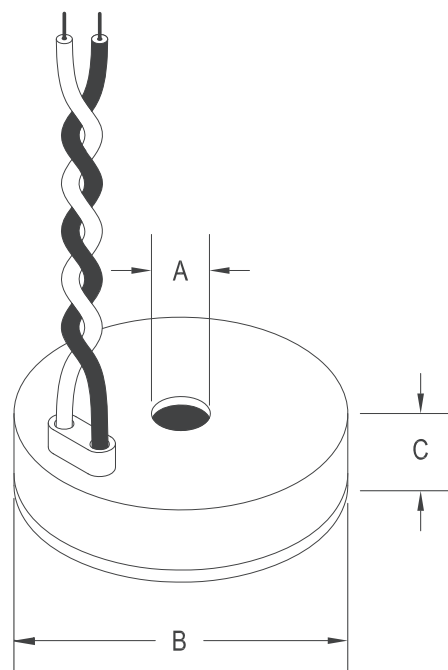
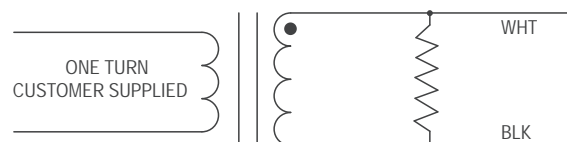
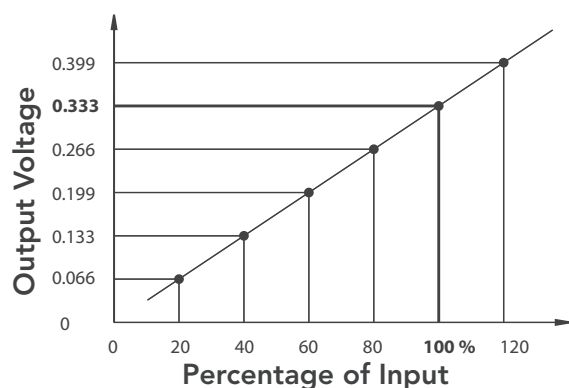
- Rated input up to 30 Amp
- Output 0.333 Volt AC at rated current
- Linearity accuracy $\pm 1\%$
- Accuracy at 10% to 130% of rated current

- Phase angle < 1 degrees measured at 50% rated current
- Operates from 30 Hz to 1,000 Hz
- 8 ft. twisted-pair lead
- Maximum Voltage: 600 V (on bare conductor)
- UL recognized, CE, and RoHS compliant



PART NUMBER AND RATING	
UCT-0300-000	No Burden Resistor
UCT-0300-005	5 Amp
UCT-0300-010	10 Amp
UCT-0300-015	15 Amp
UCT-0300-020	20 Amp
UCT-0300-030	30 Amp

DIMENSION	INCH	MM
A	0.300	7.62
B	1.700	43.18
C	0.750	19.05



Solid-Core AC Current Sensor UCT-0500

0.50 Inch Opening With Ratings Up To 60 Amps

Description:

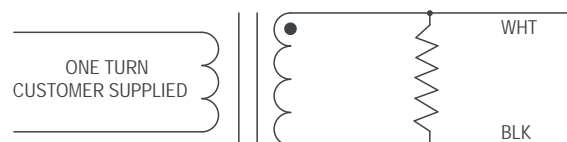
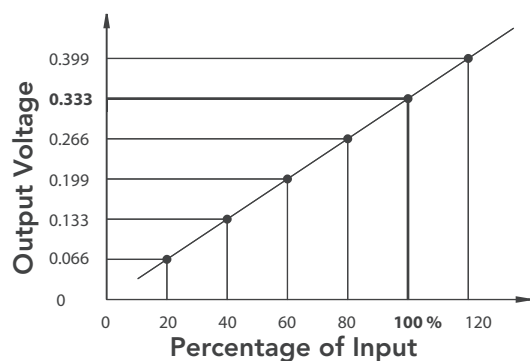
Magnelab UCT-0500 Series are better than one percent accuracy and less than one degree phase angle. Output is controlled by a precision resistor fixed at the industry standard of 0.333 Volt AC. The rugged epoxy encapsulated construction comes with eight feet twisted-leads. Custom outputs and other parameters are available at customer request.

Features:

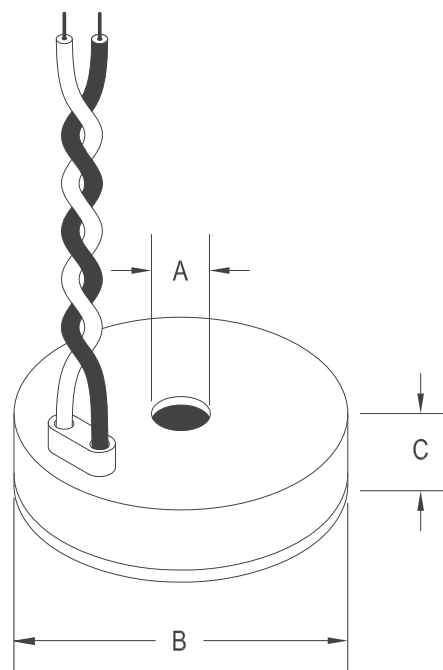
- Rated input up to 60 Amp
- Output 0.333 Volt AC at rated current
- Linearity accuracy $\pm 1\%$
- Accuracy at 10% to 130% of rated current
- Phase angle < 1 degrees measured at 50% rated current
- Operates from 30 Hz to 1,000 Hz
- 8 ft. twisted-pair lead
- Maximum Voltage: 600V (on bare conductor)
- UL recognized, CE, and RoHS compliant



PART NUMBER AND RATING	
UCT-0500-000	No Burden Resistor
UCT-0500-010	10 Amp
UCT-0500-015	15 Amp
UCT-0500-020	20 Amp
UCT-0500-030	30 Amp
UCT-0500-050	50 Amp
UCT-0500-060	60 Amp



DIMENSION	INCH	MM
A	0.50	12.70
B	1.900	48.26
C	0.750	19.05



Solid-Core AC Current Sensor UCT-0750

0.75 Inch Opening With Ratings Up To 100 Amps

Description:

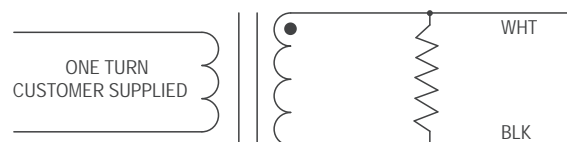
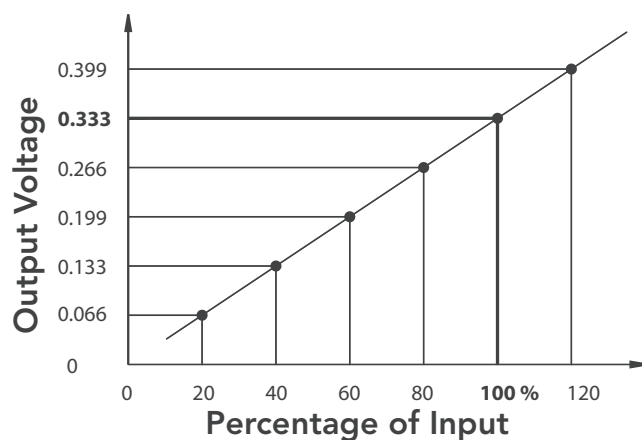
Magnelab UCT-0750 Series are better than one percent accuracy and less than one degree phase angle. Output is controlled by a precision resistor fixed at the industry standard of 0.333 Volt AC. The rugged epoxy encapsulated construction comes with eight feet twisted-leads. Custom outputs and other parameters are available at customer request.

Features:

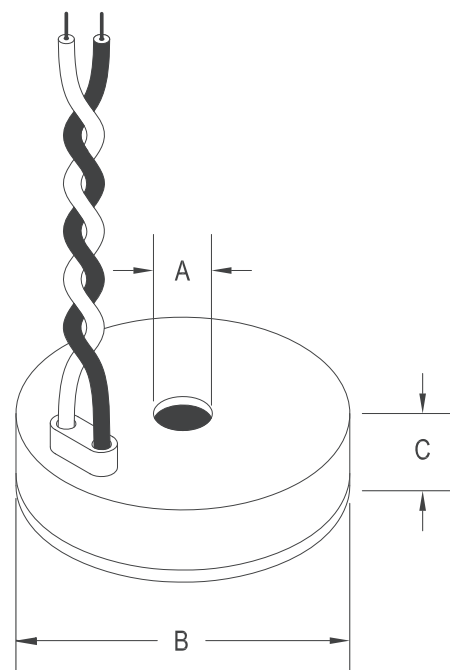
- Rated input up to 100 Amp
- Output 0.333 Volt AC at rated current
- Linearity accuracy $\pm 1\%$
- Accuracy at 10% to 130% of rated current
- Phase angle < 1 degrees measured at 50% rated current
- Operates from 30 Hz to 1,000 Hz
- 8 ft. twisted-pair lead
- Maximum Voltage: 600 V (on bare conductor)
- UL recognized, CE, and RoHS compliant



PART NUMBER AND RATING	
UCT-0750-000	No Burden Resistor
UCT-0750-030	30 Amp
UCT-0750-050	50 Amp
UCT-0750-070	70 Amp
UCT-0750-100	100 Amp



DIMENSION	INCH	MM
A	0.750	19.05
B	2.100	53.34
C	0.750	19.05



Solid-Core AC Current Sensor UCT-1000

1.00 Inch Opening With Ratings Up To 200 Amps

Description:

Magnelab UCT-1000 Series are better than one percent accuracy and less than one degree phase angle. Output is controlled by a precision resistor fixed at the industry standard of 0.333 Volt AC. The rugged epoxy encapsulated construction comes with eight feet twisted-leads. Custom outputs and other parameters are available at customer request.

Features:

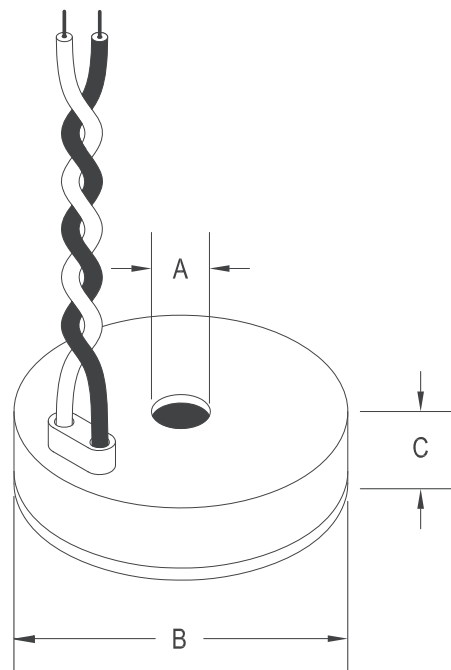
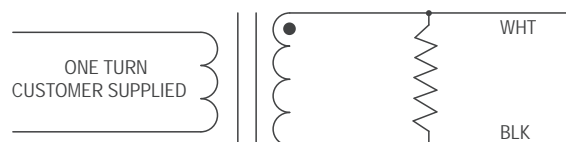
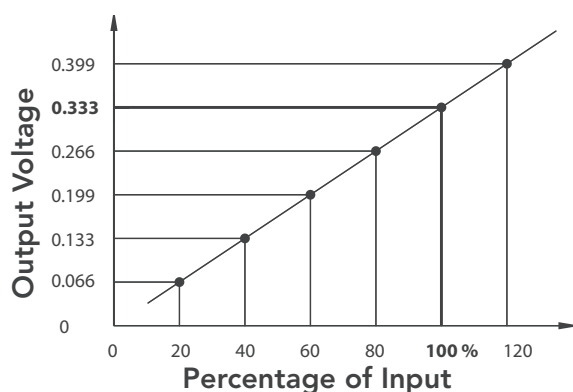
- Rated input up to 200 Amp
- Output 0.333 Volt AC at rated current
- Linearity accuracy $\pm 1\%$
- Accuracy at 10% to 130% of rated current

- Phase angle < 1 degrees measured at 50% rated current
- Operates from 30 Hz to 1,000 Hz
- 8 ft. twisted-pair lead
- Maximum Voltage: 600 V (on bare conductor)
- UL recognized, CE, and RoHS compliant



PART NUMBER AND RATING	
UCT-1000-000	No Burden Resistor
UCT-1000-050	50 Amp
UCT-1000-070	70 Amp
UCT-1000-100	100 Amp
UCT-1000-150	150 Amp
UCT-1000-200	200 Amp

DIMENSION	INCH	MM
A	1.000	25.40
B	2.400	60.96
C	0.800	20.32



Solid-Core AC Current Sensor UCT-1250

1.25 Inch Opening With Ratings Up To 400 Amps

Description:

Magnelab UCT-1250 Series are better than one percent accuracy and less than one degree phase angle. Output is controlled by a precision resistor fixed at the industry standard of 0.333 Volt AC. The rugged epoxy encapsulated construction comes with eight feet twisted-leads. Custom outputs and other parameters are available at customer request.

Features:

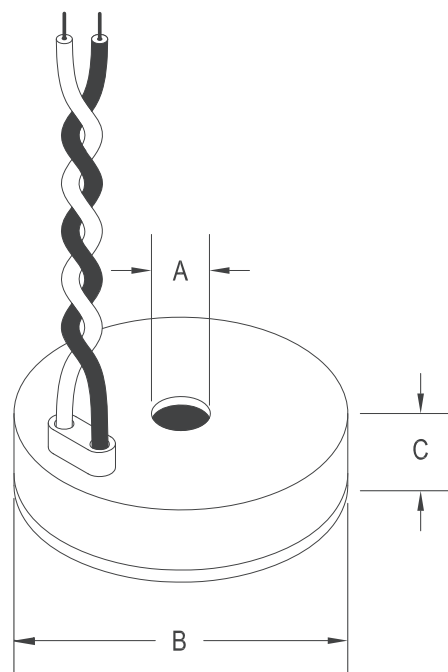
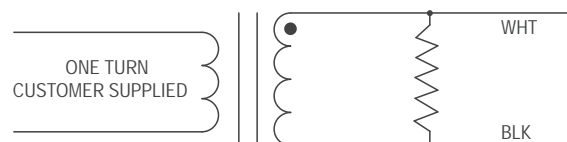
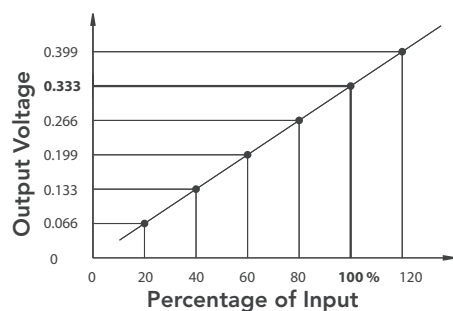
- Rated input up to 400 Amp
- Output 0.333 Volt AC at rated current
- Linearity accuracy $\pm 1\%$
- Accuracy at 10% to 130% of rated current

- Phase angle < 1 degrees measured at 50% rated current
- Operates from 30 Hz to 1,000 Hz
- 8 ft. twisted-pair lead
- Maximum Voltage: 600V (on bare conductor)
- UL recognized, CE, and RoHS compliant



PART NUMBER AND RATING	
UCT-1250-000	No Burden Resistor
UCT-1250-070	70 Amp
UCT-1250-100	100 Amp
UCT-1250-150	150 Amp
UCT-1250-200	200 Amp
UCT-1250-250	250 Amp
UCT-1250-300	300 Amp
UCT-1250-400	400 Amp

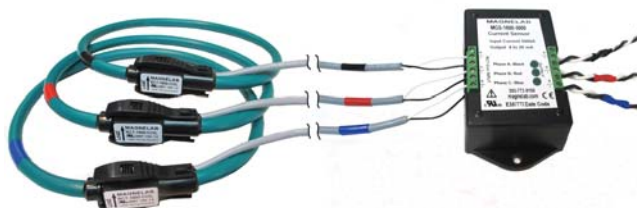
DIMENSION	INCH	MM
A	1.250	31.75
B	2.700	68.58
C	0.800	20.32



Three-Phase 4-20 mA True-RMS AC Current Transducer MGS-1800

Description:

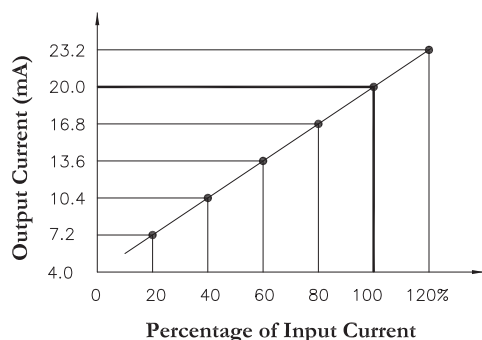
The MGS Series integrator and 4 to 20 mA Transducer (signal conditioner) converts the RopeCT (Rogowski Coil) input voltage to 4 - 20 mA DC output. The transducer requires a DC loop power supply which operates from 8 to 35 Vdc. The transducer is available with screw terminals for ease of installation.



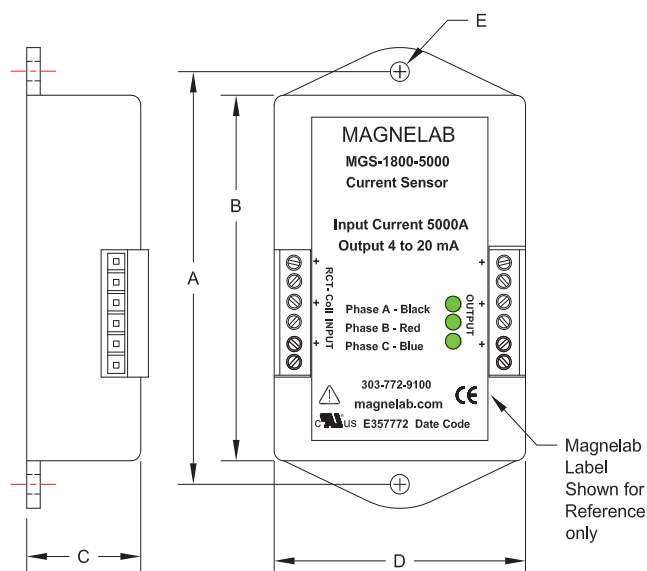
Features:

- True RMS measurement. Ideal for distorted Waveforms
- Self powered from 4 - 20 mA Loop
- LEDs on each phase indicate when unit is connected to suitable power
- Input: 250 to 5,000 Amp (or custom amperage)
- Accuracy $\pm 1\%$
- 4 ft. Insulated leads (from RopeCT® to integrator)
- 8 ft. Output leads twisted pair (600V), three sets
- Maximum Voltage: 600 V (on bare conductor)
- UL Recognized, CE and RoHS compliant

PART NUMBER AND RATING	
MGS-1800-0250	250 Amp
MGS-1800-0400	400 Amp
MGS-1800-0500	500 Amp
MGS-1800-0800	800 Amp
MGS-1800-1000	1000 Amp
MGS-1800-1500	1500 Amp
MGS-1800-2000	2000 Amp
MGS-1800-2500	2500 Amp
MGS-1800-3000	3000 Amp
MGS-1800-4000	4000 Amp
MGS-1800-5000	5000 Amp



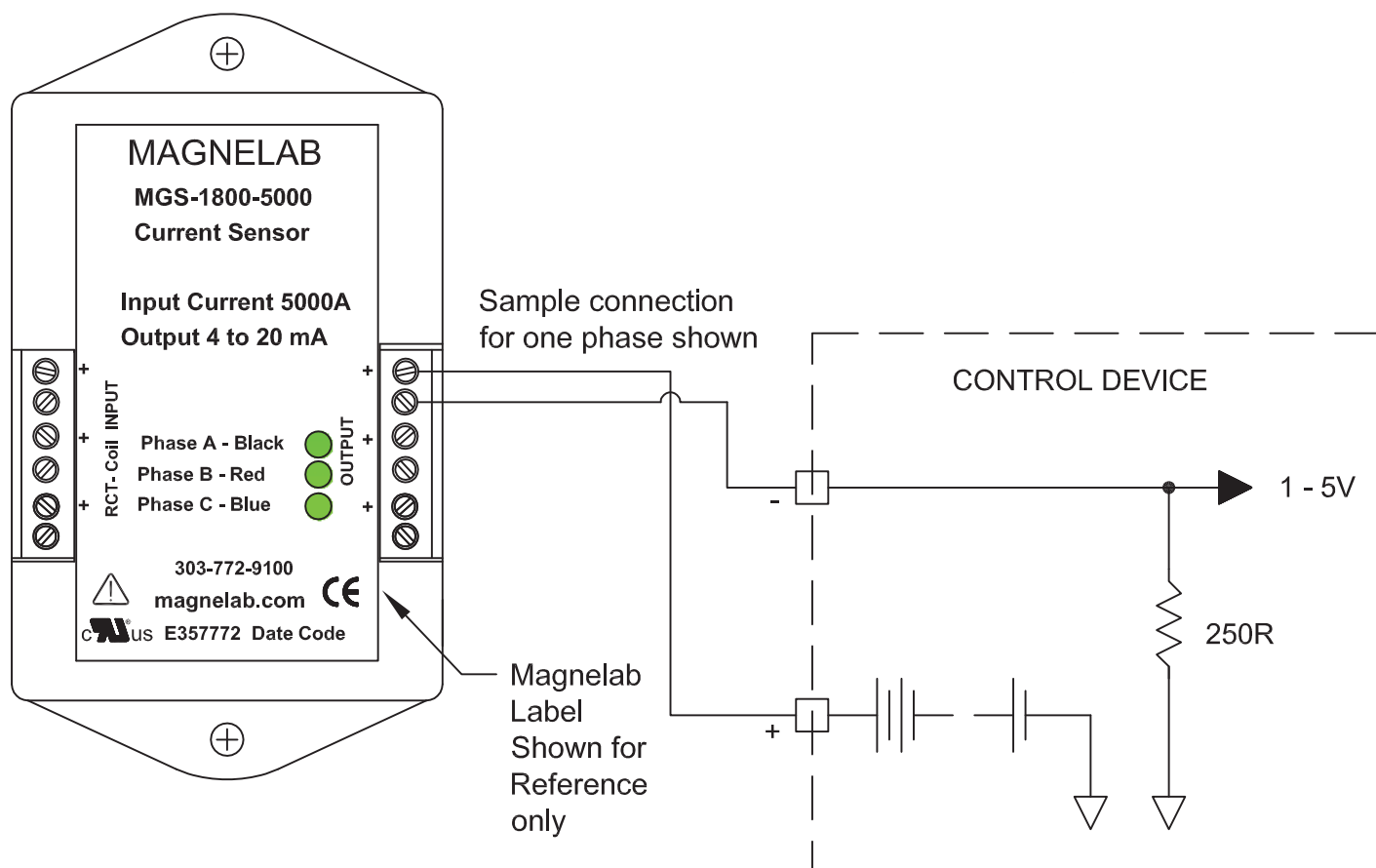
DIMENSION	INCH	MM
A	3.95	100.33
B	3.50	88.90
C	1.15	29.21
D	2.50	63.50
E	0.190 dia.	4.83



Three-Phase 4-20 mA True RMS AC Current Transducer MGS-1800

Specifications:

- Power: Standard 4 - 20 mA Loop, voltage 8 - 35 VDC (Each phase)
- Input: Up to 5000 A measured by Magnelab RopeCT
- Output: 4 - 20 mA Loop (Sinking), Maximum impedance 750 Ohms @ 24 VDC (Each phase)
- Accuracy: True RMS, 1% FS, up to crest factor 4
- Input frequency: 40 to 3000Hz
- Enclosure: Plastic box with metal plate cover on bottom and mounting bracket
W = 2.50", H = 1.15", L = 3.50" (Not including mounting brackets)
- Indicator: Green LEDs light when connected correctly to output 4 - 20 mA current loop



RopeCT® AC Current Sensor RCT-1800

18 Inch Rogowski Coil

Description:

Magnelab RCT-1800 Series flexible RopeCT® current sensor measures AC current up to 5,000 Amps. The coil opens at the connector junction and can be installed on an existing cable or buss-bar in a matter of seconds.

Features:

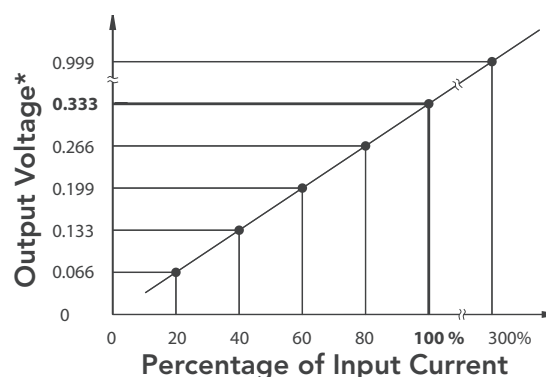
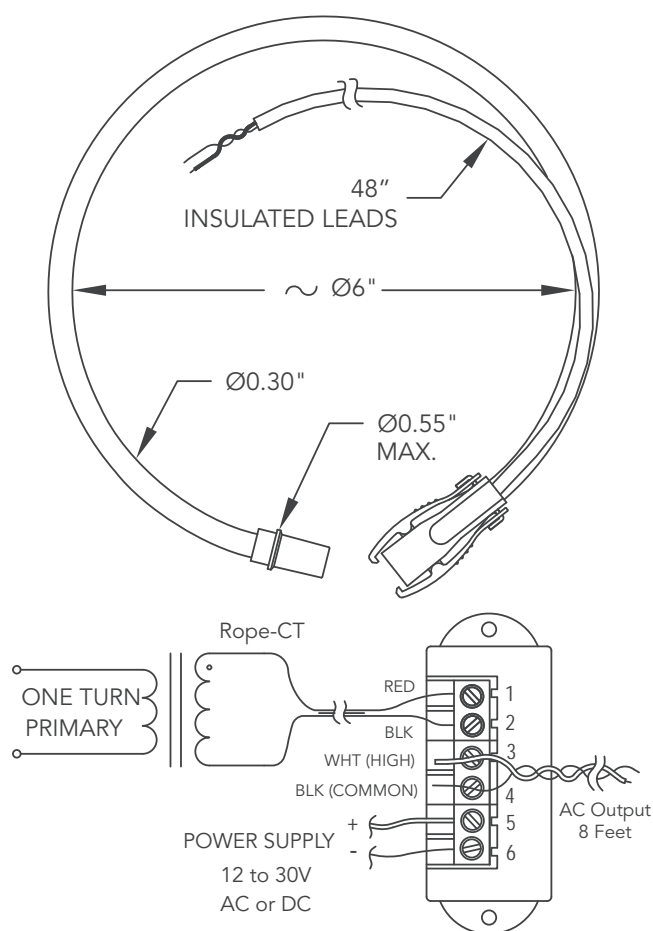
- Input from 250 Amp to 5,000 Amp
- Output of 0.333 Volt at rated current
- Linearity Accuracy 1%
- Accuracy from 100 Amps to 15,000 Amps
- Phase angle < 0.5 degrees measured at 50% rated current
- Integrator requires power supply 12 to 30V AC or DC (not included)
- 8 ft. twisted pair leads
- Maximum Voltage: 600 V (on bare conductor)
- Custom length, output, and other parameters are available



PART NUMBER AND RATING

PART NUMBER	RATING
RCT-1800-YYYY	Optional Rating*
RCT-1800-0250	250 Amp
RCT-1800-0400	400 Amp
RCT-1800-0500	500 Amp
RCT-1800-0800	800 Amp
RCT-1800-1000	1000 Amp
RCT-1800-1500	1500 Amp
RCT-1800-2000	2000 Amp
RCT-1800-2500	2500 Amp
RCT-1800-3000	3000 Amp
RCT-1800-4000	4000 Amp
RCT-1800-5000	5000 Amp

* with Magnelab Integrator



Three-Phase RopeCT®

AC Current Sensor RCS-1800

Three 18 inch Rogowski Coils With Integrator

Description:

The RCS Series integrator (signal conditioner) converts the RopeCT (Rogowski Coil) input voltage to 0.333 volt AC output. The integrator requires a DC power supply which operates from 9 to 36 Vdc. The integrator is available with screw terminals (pictured) or with flexible strain relief cables attached to the integrator.

Features:

- Input: 250 Amp to 5,000 Amp (or custom amperage)
- Output 0.333 V at rated current (up to 5 V available)
- Accuracy $\pm 1\%$
- Phase angle < 0.5 degrees
- Maximum Voltage: 600 V (on bare conductor)



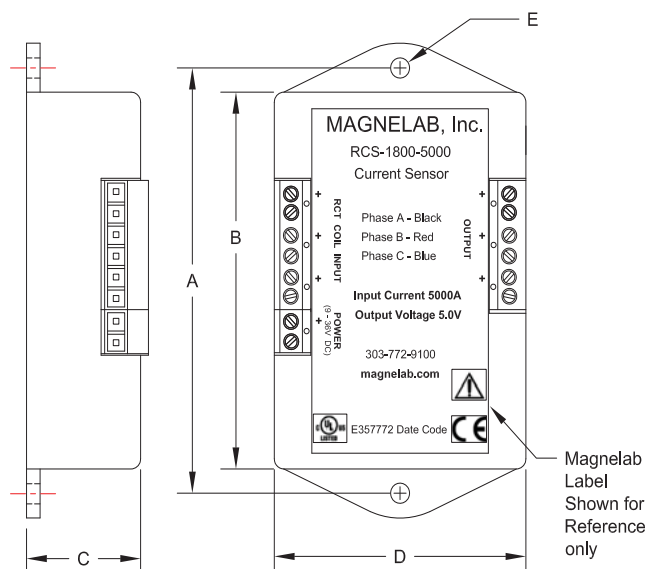
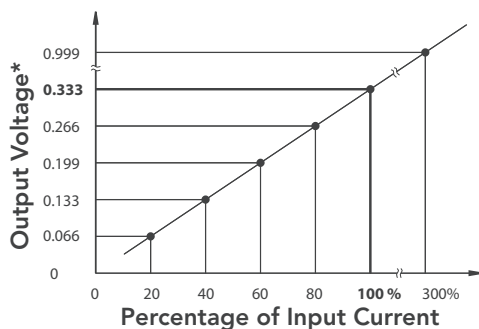
Optional power supply shown

Integrator Specifications:

- 9-36 VDC Power supply required, available as option
- 4 ft. insulated leads (from RopeCT® to integrator)
- 8 ft. output leads twisted pair (600V)

PART NUMBER AND RATING	
RCS-1800-0250	250 Amp
RCS-1800-0400	400 Amp
RCS-1800-0500	500 Amp
RCS-1800-0800	800 Amp
RCS-1800-1000	1000 Amp
RCS-1800-1500	1500 Amp
RCS-1800-2000	2000 Amp
RCS-1800-2500	2500 Amp
RCS-1800-3000	3000 Amp
RCS-1800-4000	4000 Amp
RCS-1800-5000	5000 Amp

DIMENSION	INCH	MM
A	3.940	100.08
B	3.375	85.73
C	1.125	28.58
D	2.500	63.50
E	0.187 dia.	4.75



DC Voltage Transducer

DVT-100 and DVT-1000

DIN Rail Mounted Isolated Transducer

Description:

The DVT Transducer is designed to convert a DC Voltage input to either a 4-20mA or a voltage standard output that is proportional to the input. It is also perfect for solar-string voltage monitoring. The transducer provides effective and safe isolation between the input and output.

Electrical Specifications:

- Primary voltage DVT-100: 1-100Vdc
DVT-1000: 10-1000Vdc
- Output 4-20mA, 0-1Vdc, 0-5Vdc (see chart below)
- Accuracy: $\pm 1\%$ over range
- Linearity: 0.5% over range
- Response time: DVT-100 10.0 mSec
DVT-1000 0.09mSec

PART NUMBER AND RATING	INPUT	OUTPUT
DVT-100-420	100 Volt	4-20mA
DVT-100-V05	100 Volt	0-5VDC
DVT-1000-420	1000 Volt	4-20mA
DVT-1000-V01	1000 Volt	0-1VDC
DVT-1000-V05	1000 Volt	0-5VDC

Mechanical Specifications:

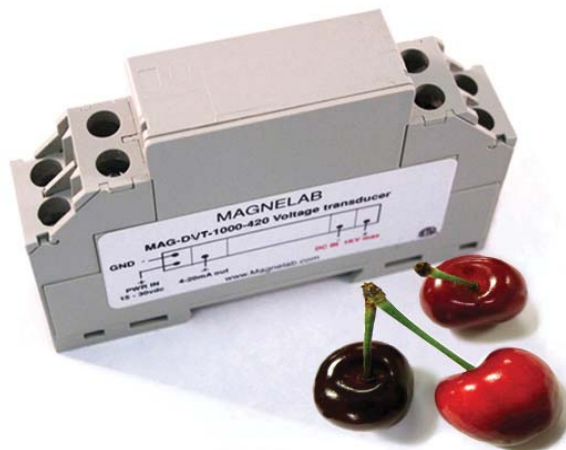
- DIN Rail EN 50 022 or wall mounting
- Screw type terminals
- Warranty - 7 years

Safety:

- Conforms to UL508C
- Certified to CSA C22.2

Applications:

- Solar-string monitoring
- Power sensing
- Over/under voltage
- Battery and energy storage
- Charge controller monitoring

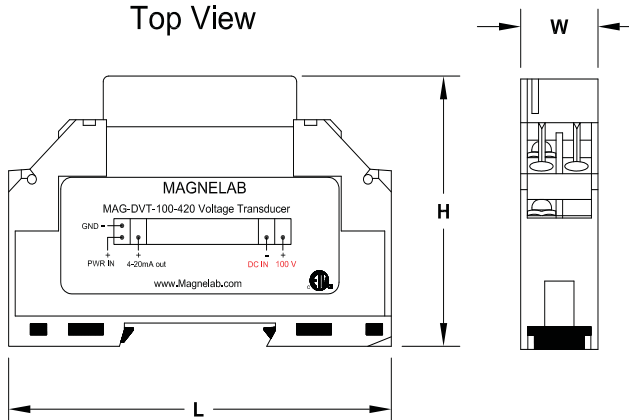


- Working Range: 0-120%
- Overload: 150% continuous
- Temperature: -30°C to 70°C operating
- Humidity: 90% operating
- Isolation: 4.5KV, 1 minute
- Supply voltage: 15-48Vdc

DIMENSION	INCH	MM
H	2.320	58.93
W	0.710	18.03
L	3.520	89.41



Top View



Potential Voltage Transformers SPT-0375

Provides Proportional Voltage For 115 To 460 Volt AC

Description:

The Magnelab SPT-0375 series of potential transformer provides a linear output voltage proportional to the input voltage. The output voltage is ANSI standard of 0.333 volt making the SPT series ideal for data loggers and other electronic measuring instrumentation. Custom outputs and other parameters are available at customer request.

Features:

- Rated input from 115 volts to 460 Volts
- Output of 0.333 Volt at rated voltage
- Linearity accuracy $\pm 1\%$
- Accuracy at 10% to 130% of rated voltage
- Phase angle < 1 degree
- Withstand voltage of 2,500 Vrms primary to secondary
- Input leads 14 AWG 8 ft., Output leads 22 AWG 8 ft.
- Two mounting holes using #8/32 blind inserts

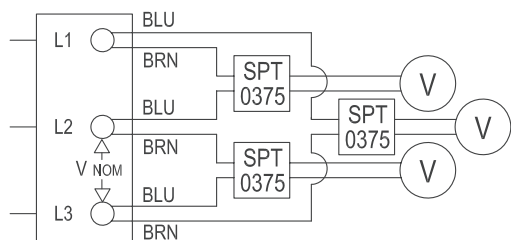


PART NUMBER AND RATING	
SPT-0375-150	Rated 115 VAC
SPT-0375-300	Rated 230 VAC
SPT-0375-600	Rated 460 VAC

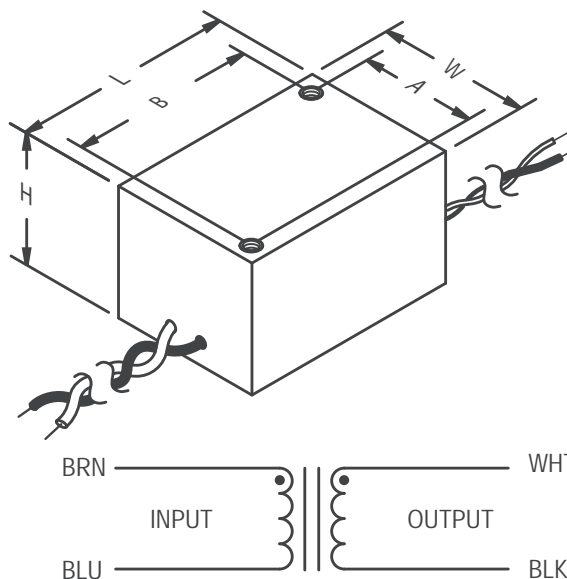
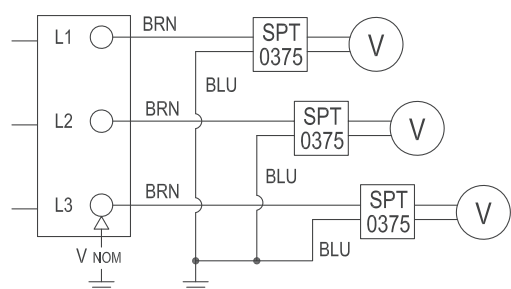
DIMENSION	INCH	MM
A	1.350	34.29
B	1.750	44.45
H	1.470	37.34
L	2.230	56.64
W	1.830	46.48

Possible 3 Phase Connections:

Delta



Y



Split-Core AC Current 4 to 20 mA Transducer MAG-J24M420

24mm Opening With Ratings Up to 250 Amps

Description:

Magnelab's MAG-J24M420 split-core current transducer "senses" AC current up to 250 Amps passing through the center conductor. Split-core transducers are ideal for installation on existing electrical wiring by snapping around the conductor. The MAG-J24M420 has a self-locking mechanism.

Features:

- Rated input up to 250 Amp
- Output of standard 4 to 20 mA DC
- Accuracy +/- 2%, Ripple within 2% of output voltage
- Maximum load resistance: 600 Ohms at P/S: 24V



- Max allowable current 120% continuous, 150 % 1min
- Frequency range 50/60 Hz
- 2 X M3-Screw terminals
- Installation Category CAT III
- UL recognized, CE, and RoHS compliant

PART NUMBER AND RATING

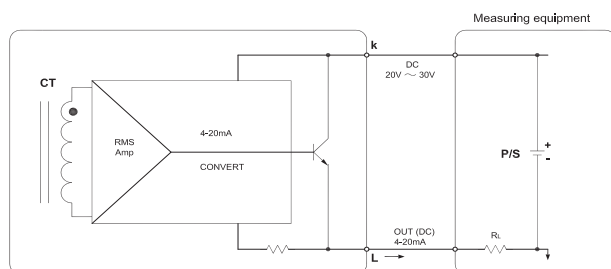
PART NUMBER AND RATING
MAG-J24M420-250 250Amp

DIMENSION

INCH

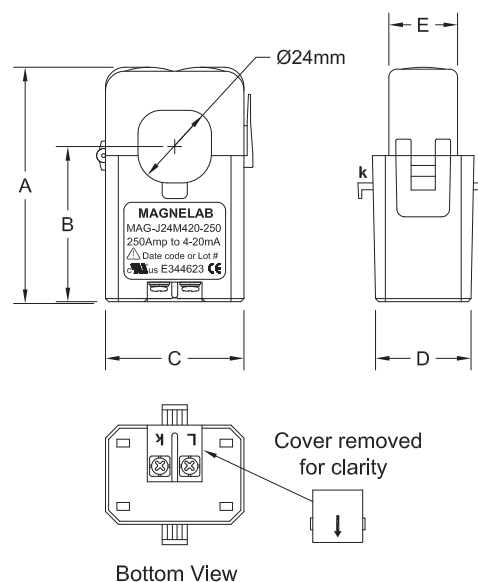
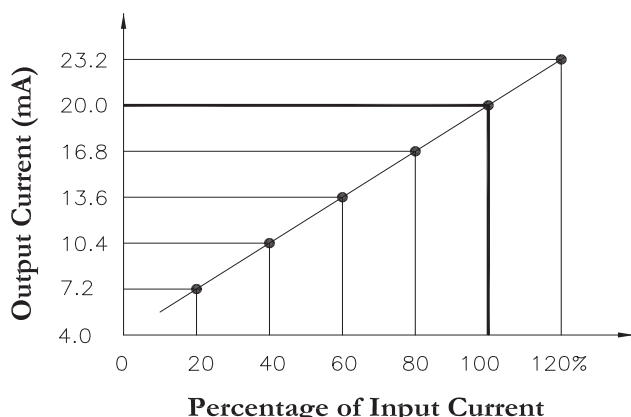
MM

DIMENSION	INCH	MM
A	3.00	76.00
B	1.87	47.50
C	1.77	45.00
D	1.34	34.00
E	0.84	21.34



2-Wire transmission method (loop powered)
using P/S (+ side) of Measuring equipment

SCHEMATIC



Loop Powered Device

MGT-0420-001

Universal 4-20mA True RMS Signal Transducer

Application:

- The MGT-0420-001 signal transducer converts zero to 333 mV AC signal to standard 4 to 20 mA DC voltage.
- This device is not recommended for use with the Magnelab RCT intergrator or RCS unit.
- The MGT-0420-001 helps to reduce inventory by allowing the measurement of various signals by simply changing the input device.



ORDER INFORMATION			
Part Number	Input	Output	Accuracy (Full Scale)
MGT-0420-001	0-333mV	4 - 20 mA	0.3%

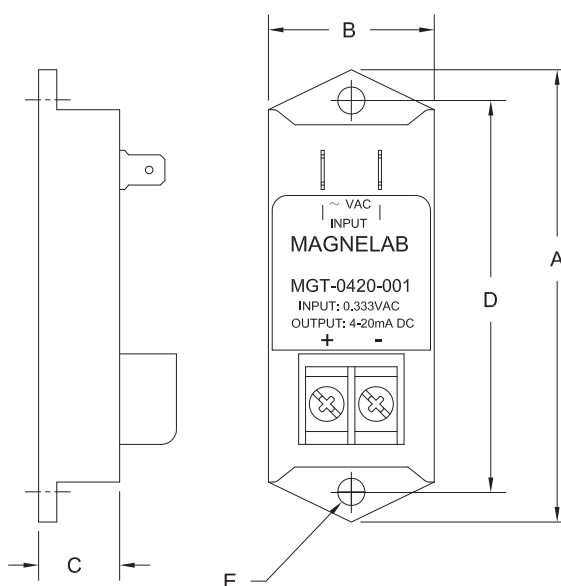
Features:

- Highly accurate, true RMS measurement. Ideal for distorted waveforms.
- Self powered from the 4 -20 mA loop.
- Robust construction, compact size and easy wiring.

Specifications:

- Power: Standard 4-20 mA loop. voltage 8 - 35 VDC
- Input: 0-333mV full scale AC voltage. via input spade connectors.
- Output: 4 -20 mA loop (Sinking), Max. impedance 750 Ω @ 24VDC (Barrier strip terminal provided).
- Accuracy: True RMS, 0.3% Full scale, up to crest factor 4.
- Frequency: 40 to 3000 Hz
- Enclosure: Potted plastic box. Back mouting bracket

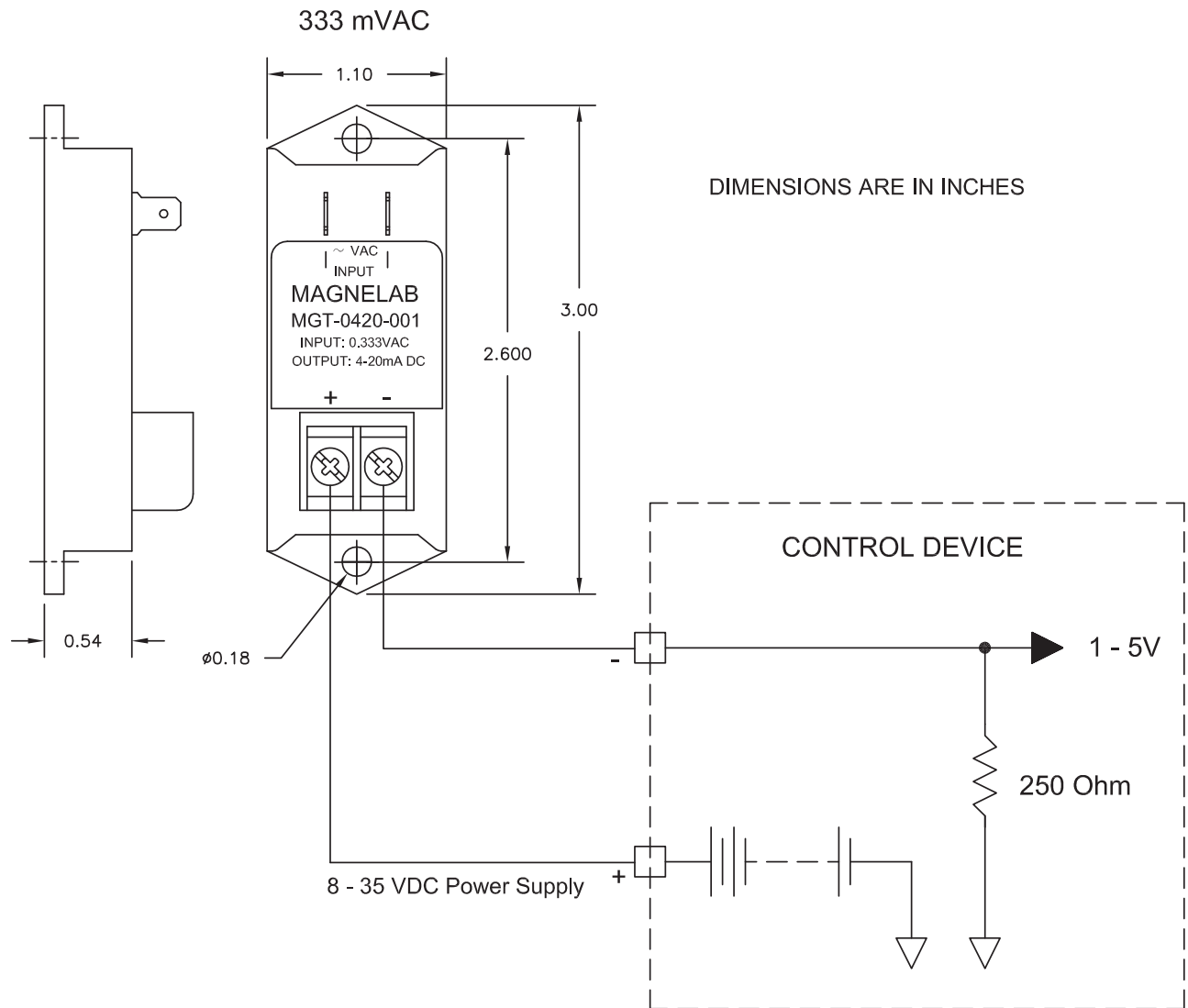
DIMENSION	INCH	MM
A	3.00	76.2
B	1.10	20.0
C	0.54	13.7
D	2.60	66.0
E	0.18	4.6



Loop Powered Device

MGT-0420-001

Universal 4-20mA True RMS Signal Transducer



MGC-1000-Series

Current to Current Transformers

Current ratio transformer provides a
5 Amp output at the rated input Current.

Features:

- Rugged construction for ease of handling and use
- For indoor/outdoor applications
- Non-Standard value available

Electronic Specifications:

- Output is linear from 10% of rated current to 130% of rated current
- Operates from 50 Hz to 400 Hz

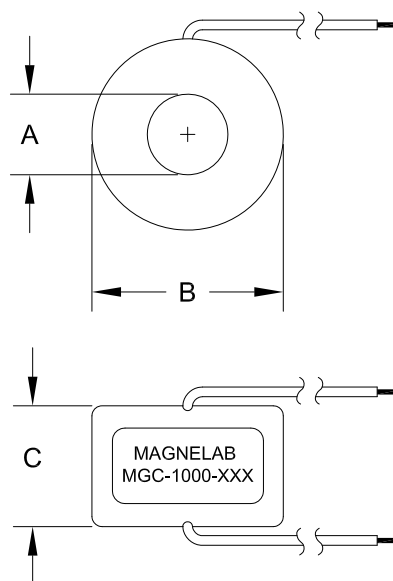


MAGNELAB P/N:	CURRENT RATIO	VA +/- 1% CLASS	ANSI METERING CLASS @ 60Hz			
			B0.1	B0.2	B0.5	B0.9
MGC-1000-030	30:5	2				
MGC-1000-050	50:5	2.5	2.4			
MGC-1000-060	60:5	2.5	2.4	2.4		
MGC-1000-075	75:5	3.5	2.4	2.4		
MGC-1000-080	80:5	4.0	1.2	2.4		
MGC-1000-100	100:5	5.0	0.6	0.6		
MGC-1000-120	120:5	5.0	0.6	0.6		
MGC-1000-125	125:5	5.0	0.6	0.6		
MGC-1000-150	150:5	10.0	0.6	0.6	2.4	
MGC-1000-200	200:5	12.5	0.3	0.6	1.2	
MGC-1000-250	250:5	15.0	0.3	0.6	1.2	
MGC-1000-300	300:5	20.0	0.3	0.3	0.6	1.2
Other ratings and specification are available						

DIMENSION	INCH	MM
A	1.00 Min.	25.40 Min.
B	2.38 Max.	60.45 Max.
C	1.50 Max.	38.10 Max.

Mechanical:

- 24" Flexible leads, 16 GA.
UL1015, 105 degree C, 600V
- Rubberized coating for strength and protection
- See detail for size and dimensions
- Meet ANSI metering class at 60 Hz per table
- Approximate weight 0.50 lb



AC Current Output Transformer CCT-1200

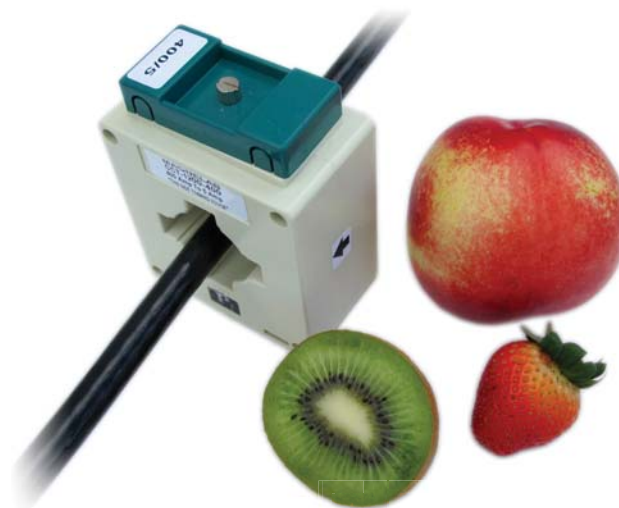
1.65" Opening With Ratings Up To 600 Amps

Description:

Magnelab CCT-1200 Series AC current transformers output 5A and can measure current up to 600A. All materials used are UL recognized class B material. These units pass hi-pot test at 4,000V RMS.

Features:

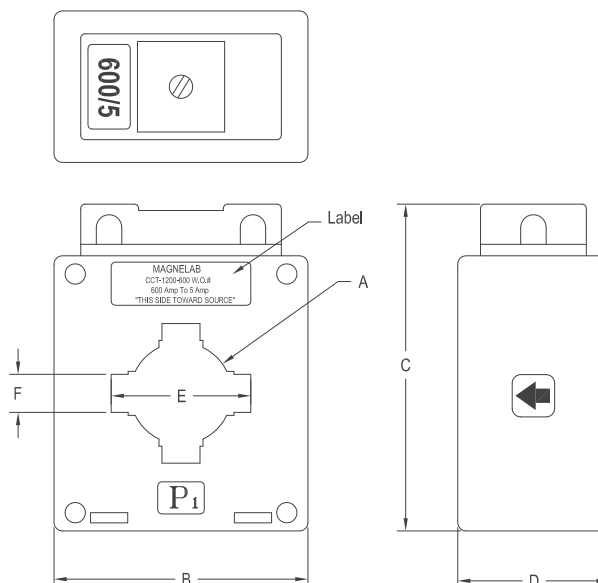
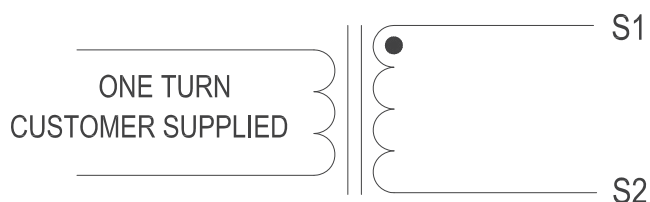
- Input 100 to 600 Amps
- Output 5 Amps
- 50Hz to 60Hz operation
- 5VA Rate Load
- Accuracy Class 0.5



PART NUMBER AND RATING	INPUT	OUTPUT
CCT-1200-100	100 Amp	100:5 Ratio
CCT-1200-200	200 Amp	200:5 Ratio
CCT-1200-400	400 Amp	400:5 Ratio
CCT-1200-600	600 Amp	600:5 Ratio

DIMENSION	INCH	MM
A	1.200	30.48
B	3.000	76.20
C	3.860	98.04
D	1.790	45.47
E	1.650	41.91
F	0.450	11.43

SPECIFICATION



Split-Core AC Current Output Transformer

MAG-J24C005

24mm Opening With Ratings Up to 100 Amps

Description:

Magnelab's MAG-J24C005 split-core current transformer "senses" AC current up to 100 Amps passing through the center conductor. Split-core transformers are ideal for installation on existing electrical wiring by snapping around the conductor. The MAG-J24C005 has a self-locking mechanism.

Features:

- Rated input up to 100 Amp
- Output of 5 Amps at rated current
- Accuracy Class 3 up to 1.5 VA
- Accuracy at 5% to 120% of rated current



- Protection level 6.5Vp Bipolar
- Frequency range 50/60 Hz
- 2 X M3-Screw terminals
- System Voltage: 720 V, CAT II or CAT III 600VAC
- UL recognized, CE and RoHS Compliant

PART NUMBER AND RATING

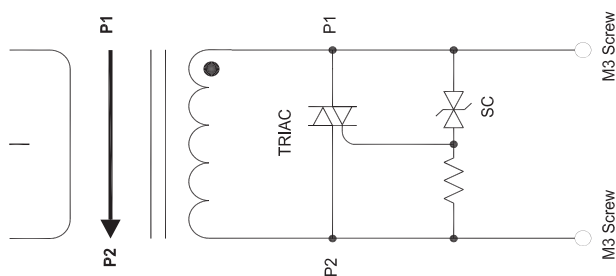
MAG-J24-C005-100	100Amp
------------------	--------

DIMENSION

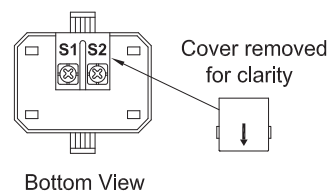
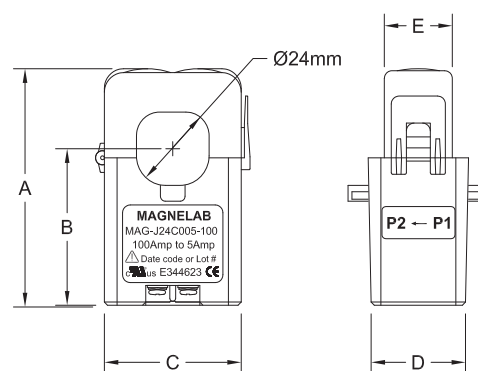
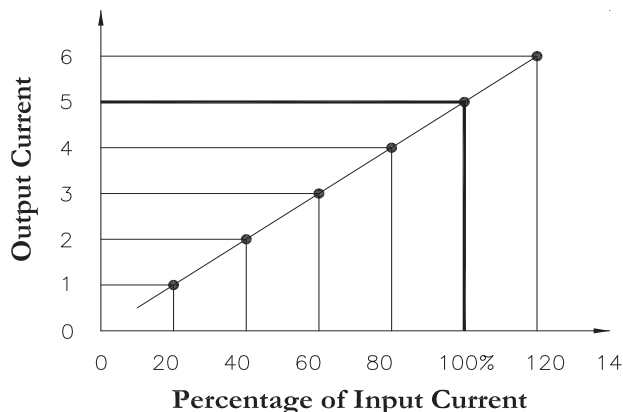
INCH

MM

DIMENSION	INCH	MM
A	3.00	76.00
B	1.87	47.50
C	1.77	45.00
D	1.34	34.00
E	0.84	21.34



SCHEMATIC



Bottom View

MAG-ICT-2000

Split-Core AC Current Transformer 2.00" Opening with 400 To 1600Amps Ratings with 5 Amp Output

Electrical Specifications

- Input current from 400 to 1,600 Amps
- Output 5 Amps at rated current (other outputs available)
- Accuracy +/- 1% at suggested burden
- Operational from 50 Hz To 400 Hz

Mechanical Specifications:

- 2.0" [51.0mm] Opening, Split-Core
- Leads 16 in. [40.6 cm] Twisted pair, 16 AWG

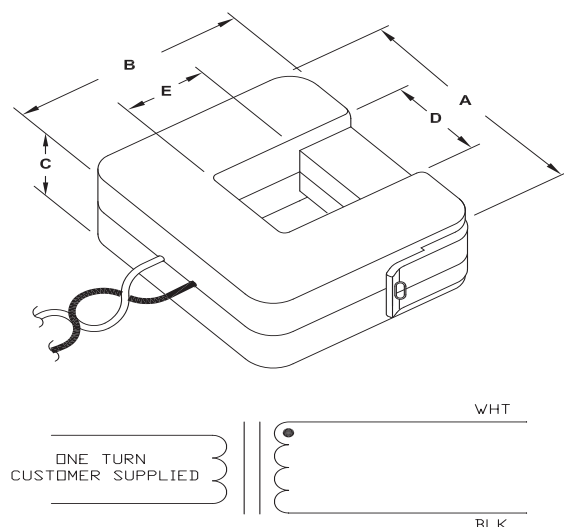
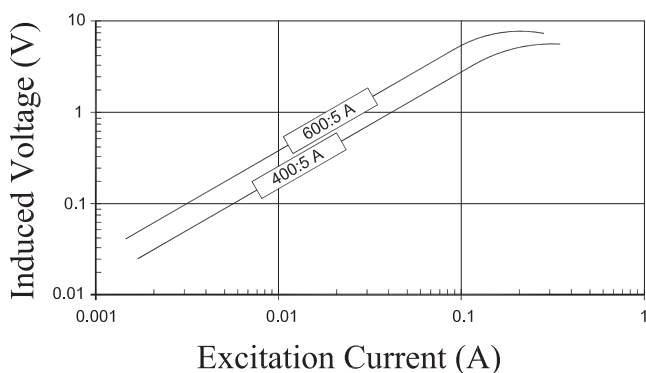


Features:

- UL recognition pending, CE RoHS compliant
- Other parameters are available at customer request.

PART NUMBER AND RATING					
MAGNELAB	ANSI Accuracy Class				
Part number	Current Ratio	B0.1	B0.2	B0.5	B1.0
ICT-2000-400	400:5	1.2			
ICT-2000-600	600:5	0.6	1.2		
ICT-2000-800	800:5	0.6	1.2		
ICT-2000-1000	1000:5	0.3	0.6	1.2	
ICT-2000-1200	1200:5	0.3	0.6	1.2	
ICT-2000-1600	1600:5	0.3	0.3	0.6	1.2

DIMENSION	INCH	MM
A	5.00	127.0
B	4.75	121.0
C	1.65	42.0
D	2.00	51.0
E	2.00	51.0



Split-Core AC Current Output Transformer

MAG-J36C005

36mm Opening With Ratings Up to 200 Amps

Description:

Magnelab's MAG-J36C005 split-core current transformer "senses" AC current up to 200 Amps passing through the center conductor. Split-core transformers are ideal for installation on existing electrical wiring by snapping around the conductor. The MAG-J36C005 has a self-locking mechanism.

Features:

- Rated input up to 200 Amp
- Output of 5 Amps at rated current
- Accuracy Class 3 up to 2.5 VA
- Accuracy at 5% to 120% of rated current



- Protection level 6.5Vp Bipolar
- Frequency range 50/60 Hz
- 2 X M3-Screw terminals
- System Voltage: 720 V, CAT II or CAT III 600VAC
- UL recognized, CE, and RoHS compliant

PART NUMBER AND RATING

MAG-J36-C005-200

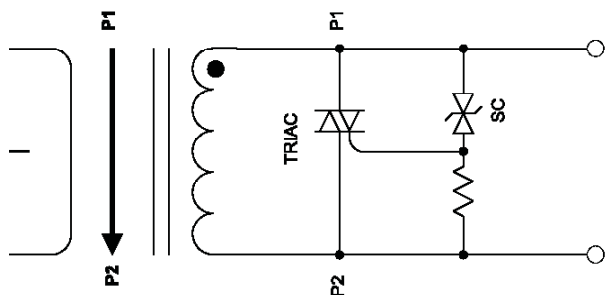
200Amp

DIMENSION

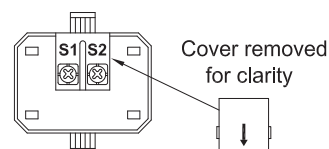
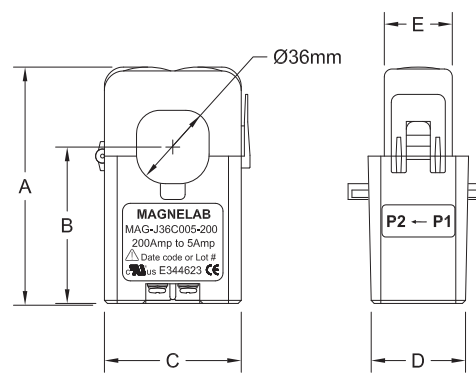
INCH

MM

DIMENSION	INCH	MM
A	3.64	92.50
B	2.25	57.15
C	2.25	57.15
D	1.58	40.25
E	0.88	22.35



SCHEMATIC



Bottom View



CT Current Transformer

The Magnelab Current Transformer (CT) Provides an accurate, non destructive (non contact), measurement of single or repetitive unipolar or bipolar pulse, or continuous wave.

The product range offers the measurement of currents from micro-amps to 20K amps, at frequencies ranging from 0.5 Hz to 500 MHz. The output signal of the transformer is an accurate voltage waveform representation of the measured current, which can be analyzed on an oscilloscope, RF power meter, spectrum analyzer or custom interface circuitry.

Offering superior performance and quality, the transformers are available in 5 case sizes, can be terminated with BNC or SMA connectors and offer a sensitivity range providing environmental application flexibility.

All transformers can be shipped with certificate of calibration and factory test data, ensuring optimum levels of performance are realized.



Application and industrial sectors include :

- Laser and Plasma research
- EMC and EMI research
- Semiconductor gate switching
- Power system harmonics and transients
- Lightning research and simulation testing
- Capacitor and electrostatic discharges
- Corona wire discharge
- Partial Discharge measurement
- Critical monitoring of current fluctuations



Higher frequency
Higher sensitivity
Higher temperature
More accuracy

The Magnelab Current Transformer offer key advantages over competing products.

- Higher frequency cutoff, assuring faithful rendering of fast transients
- Up to 5 times more sensitive for low intensity signal measurement
- Operating temperature $-20^{\circ}\text{C} - +120^{\circ}\text{C}$
- Higher nominal accuracy $\pm 0.5\%$, over a wider bandwidth

Magnelab welcome the opportunity to discuss your application requirements, offer advice and propose solutions. Should your needs fall out with our standard product specifications, we would be pleased to discuss the potential of custom solutions.

Distributors

France, Germany, Italy, Spain, U.K.:

AMS technologies

Fax: +49 898 957 71 99 Tel.: +49 898 957 70

electronic@ams.de www.ams.de

India: Avante Global Services Pvt. Ltd.

Fax: +91 11 2647 3068 - Tel.: +91 11 2644 3097

pkg@avante.in

Japan: REPIC Corporation

Fax: +81 3 3918 5712 - Tel.: +81 3 3918 5326

sales@repic.co.jp www.repic.co.jp

Korea: Dynatech Corporation

Fax: +82 2 2026 3047 - Tel.: +82 2 2026 3044

edward@kjdvna.com www.kjdvna.com

U.S.A.: GMW Associates

Fax: 650 802 8298 Tel: 650 802 8292

sales@gmw.com www.gmw.com

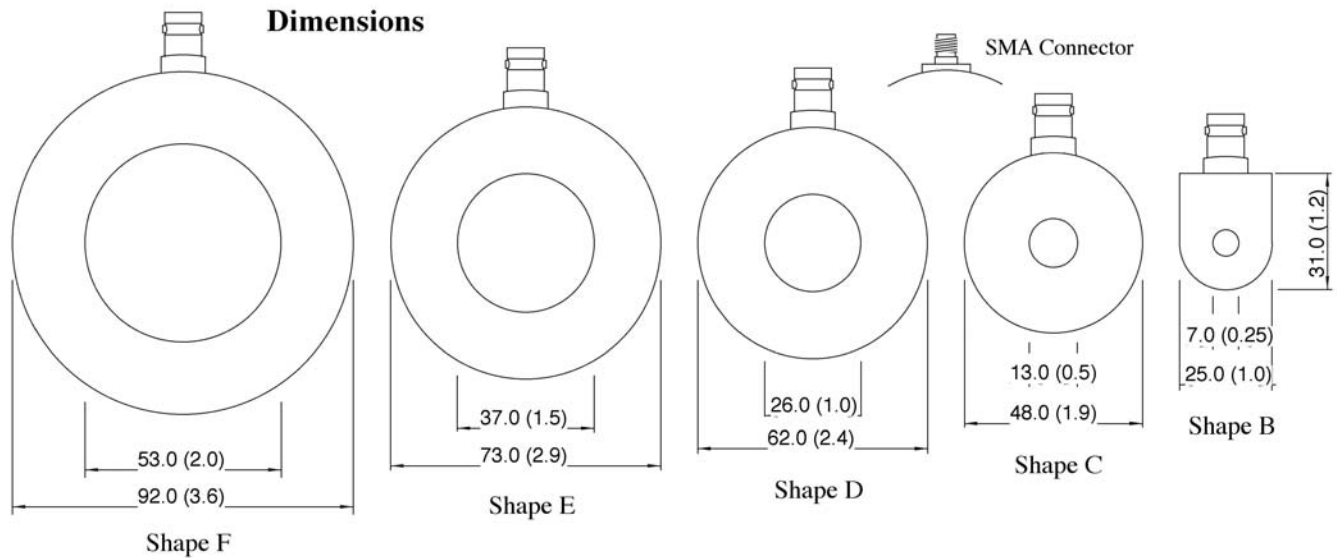
Manufacture: Magnelab, Inc.

Fax: 303 772 9400 303 772 9100

www.magnelab.com

v2.0

Note: Customer is responsible for isolating CT from bare conductors carrying high voltage. Magnelab High Frequency CTs are not intended to be used as isolation devices. They do not come with an associated voltage safety rating. The paint layer should be considered cosmetic and only offers a small level of electrical isolation. Please take necessary precautions when installing these CTs to insure adequate electrical isolation from high voltages.



Connector height BNC : 16mm (0.63") all models. Connector height SMA : 10mm (0.40") all models

Unit height : 17mm (0.67"), models C,D,E & F, 15mm (0.60") model B

Dimensions in mm (inches)

Model	Output (V/A)		Max rms	Max Peak	Droop	Rise	Max I.t *	-3db low	-3db high
	in 1M Ω	in 50 Ω	(A)	(A)	(%/us)	(ns)	(As) in 50 Ω	(Hz)	(MHz)
CT-B5.0	5.0	2.5	2	200	3	0.875	0.0001	4800	400
CT-B2.5	2.5	1.25	5	400	0.75	0.7	0.0004	1200	500
CT-B1.0	1.0	0.5	8	1000	0.13	0.7	0.0025	200	500
CT-B0.5	0.5	0.25	11	2000	0.03	1.75	0.01	48	200
CT-B0.25	0.25	0.125	16	4000	0.015	3.5	0.04	24	100
CT-B0.1	0.1	0.05	25	10000	0.006	7	0.25	10	50
CT-B0.05	0.05	0.025	35	20000	0.003	17.5	1	5	20
CT-C5.0	5.0	2.5	2	200	3	0.875	0.0002	4800	400
CT-C2.5	2.5	1.25	5	400	0.75	0.7	0.0008	1200	500
CT-C1.0	1.0	0.5	11	1000	0.13	0.7	0.005	200	500
CT-C0.5	0.5	0.25	16	2000	0.03	1.75	0.02	48	200
CT-C0.25	0.25	0.125	22	4000	0.01	3.5	0.08	12	100
CT-C0.1	0.1	0.05	35	10000	0.004	7	0.5	6	50
CT-C0.05	0.05	0.025	50	20000	0.002	17.5	2	3	20
CT-D5.0	5.0	2.5	2	200	3	0.875	0.0002	4800	400
CT-D2.5	2.5	1.25	5	400	0.75	0.7	0.0008	1200	500
CT-D1.0	1.0	0.5	11	1000	0.13	0.7	0.005	200	500
CT-D0.5	0.5	0.25	16	2000	0.03	1.75	0.02	48	200
CT-D0.25	0.25	0.125	22	4000	0.01	3.5	0.08	12	100
CT-D0.1	0.1	0.05	35	10000	0.002	7	0.5	2	50
CT-D0.05	0.05	0.025	50	20000	0.001	17.5	2	1	20
CT-E5.0	5.0	2.5	2	200	3	0.875	0.0002	4800	400
CT-E2.5	2.5	1.25	5	400	0.75	0.7	0.0008	1200	500
CT-E1.0	1.0	0.5	11	1000	0.13	0.7	0.005	200	500
CT-E0.5	0.5	0.25	22	2000	0.03	1.75	0.02	48	200
CT-E0.25	0.25	0.125	32	4000	0.01	3.5	0.08	12	100
CT-E0.1	0.1	0.05	50	10000	0.002	7	0.5	2	50
CT-E0.05	0.05	0.025	71	20000	0.001	17.5	2	1	20
CT-F5.0	5.0	2.5	2	200	3	0.875	0.0002	4800	400
CT-F2.5	2.5	1.25	5	400	0.75	0.7	0.0008	1200	500
CT-F1.0	1.0	0.5	11	1000	0.13	0.7	0.005	200	500
CT-F0.5	0.5	0.25	22	2000	0.03	1.75	0.02	48	200
CT-F0.25	0.25	0.125	32	4000	0.01	3.5	0.08	12	100
CT-F0.1	0.1	0.05	50	10000	0.002	7	0.5	2	50
CT-F0.05	0.05	0.025	71	20000	0.001	17.5	2	1	20
CT-CALCERT	Certificate of Calibration with amplitude vs. frequency response plots on option								

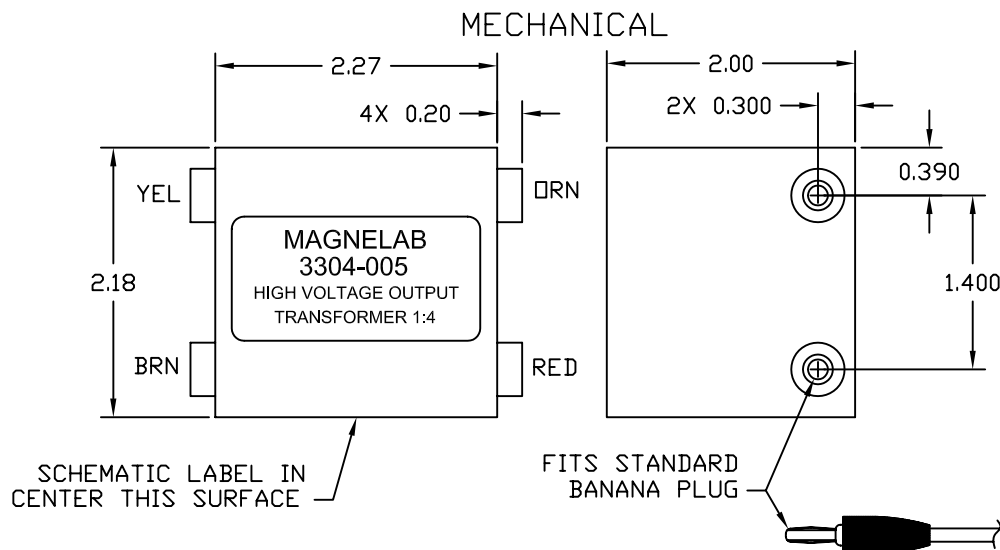
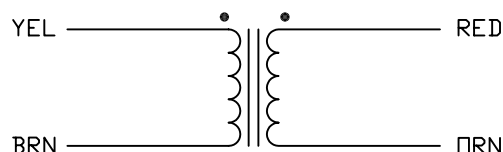
* Max I.t product for bipolar pulses in 50 Ω termination. When unipolar pulses are measured, CT output winding may require few milliamps of DC-current biasing for maximum I.t product.

Connector Selection

For termination connector append the model number with "-S" for SMA or "-B" for BNC, e.g. CT-C1.0-S

APPLICATION		REVISION		
REV.	ECO #	DESCRIPTION	DATE	APPROVED
A	4296	INITIAL RELEASE	2/17/00	ETC
B	4417	COMBINED ALL MODELS TO ONE DRAWING	4/25/2007	S.S.


SCHEMATIC



MAGNELAB P/N	TURNS RATIO	PRIMARY TURNS	SECONDARY TURNS	MAXIMUM PRIMARY VOLTAGE PEAK TO PEAK			
				100 KHz	250 KHz	500 KHz	750 KHz
3304-005	1:4	15	60	460V	1,150V	2,300V	3,450V
3304-006	1:2	15	30	460V	1,150V	2,300V	3,450V
3304-008	1:1.5	30	45	920V	2,300V	4,600V	6,900V
3304-009	1:1.1	30	33	920V	2,300V	4,600V	6,900V
3304-010	1:7	15	105	460V	1,150V	2,300V	3,450V
3304-012	1:8	15	120	460V	1,150V	2,300V	3,450V
3304-013	1:10	15	150	460V	1,150V	2,300V	3,450V
3304-014	1:3	30	90	920V	2,300V	4,600V	6,900V

SPECIFICATIONS

MAGNELAB P/N	PRIMARY INDUCTANCE	LEAKAGE INDUCTANCE	DCR MAX.		ISOLATION
			PRI.	SEC.	
-005	585 uHy MIN.	12 uHy MAX.	190mΩ	600mΩ	10,000V
-006	585 uHy MIN.	12 uHy MAX.	190mΩ	300mΩ	10,000V
-008	2.3 mHy MIN.	20 uHy MAX.	190mΩ	600mΩ	10,000V
-009	2.3 mHy MIN.	20 uHy MAX.	700mΩ	700mΩ	10,000V
-010	585 uHy MIN.	12 uHy MAX.	190mΩ	2.75 Ω	10,000V
-012	585 uHy MIN.	12 uHy MAX.	190mΩ	2.75 Ω	10,000V
-013	585 uHy MIN.	12 uHy MAX.	190mΩ	2.75 Ω	10,000V
-014	2.3 mHy MIN.	20 uHy MAX.	1.0 Ω	4.0 Ω	10,000V

UNLESS OTHERWISE SPECIFIED DIMENSIONS ARE IN INCHES TOLERANCES ARE: FRACTIONS DECIMALS ANGLES ±1/64" .XX±.010" ±0.5" (.015") .XXX±.005"	CONTRACT NO.		<div>MAGNELAB INCORPORATION LONGMONT, COLORADO 80501</div>		DESCRIPTION HIGH VOLTAGE ISOLATION TRANSFORMER	
	APPROVALS	DATE				
	DRAWN I. FRIDMAN	2/17/00				
	ENGINEERING S.S.	4/25/2007				
MATERIAL:	MANUFACTURING B.H.	4/26/2007				
FINISH	QUALITY T.J.	4/26/2007	SIZE A	CODE IDENT. NO 58439	DRAWING NO. 3304-XXX-SPEC.	REV. B
DO NOT SCALE DRAWING			SCALE 1/1		SHEET 1 OF 1	

3762-003 High Isolation Signal transformer

Provides high isolation for medical applications, including patient connect circuits

Electrical Specifications

Turns Ratio 2.875:1, step down
Isolation Primary to Secondary: 10,000 Vac
Frequency: >100KHz
Usable VA < 10
Primary Inductance = 73uH - 113uH @ 80KHz

Mechanical Specifications

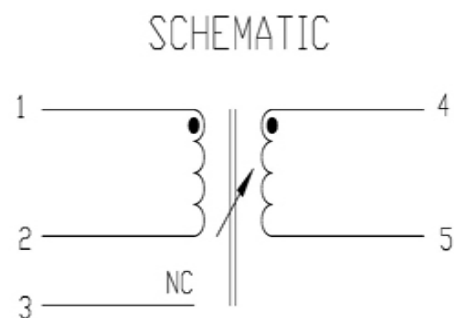
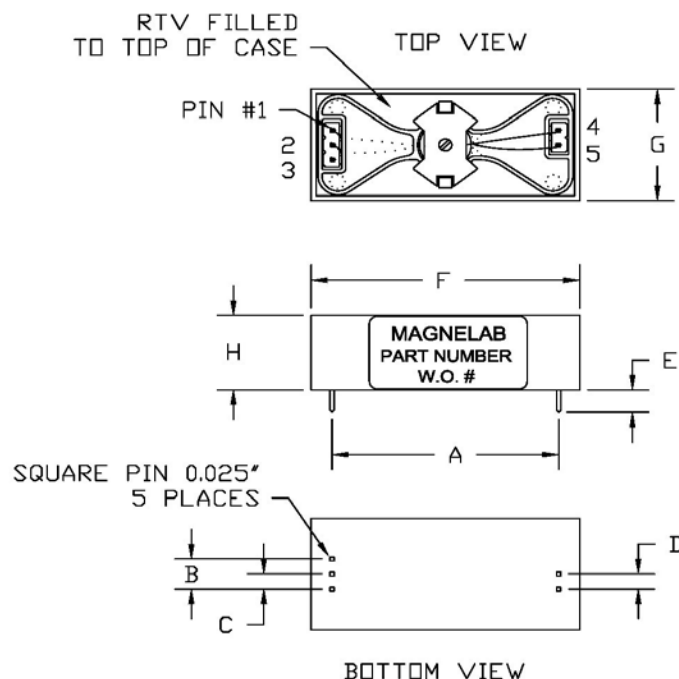
PC Mounted
Fully Encapsulated Construction
Keyed for Proper Installation

Features

UL and FDA Compatible



ALL DIMENSIONS IN INCHES	
A	1.400"
B	0.200"
C	0.100"
D	0.100"
E	0.150"
F	1.660"
G	0.750"
H	0.500"



Phone: (303) 772-9100
Fax: (303) 772-9400
E-Mail: info@magnelab.com



MAGNELAB
INCORPORATION
LONGMONT, COLORADO 80501

5233-001**High Isolation Signal transformer**

Provides high isolation for medical applications, including patient connect circuits

Electrical Specifications

Turns Ratio 2.875:1, step down
 Isolation Primary to Secondary 10,000 Vac
 Frequency: >100KHz
 Usable VA < 10
 Primary Inductance = 88uH - 98uH @ 80KHz

Mechanical Specifications

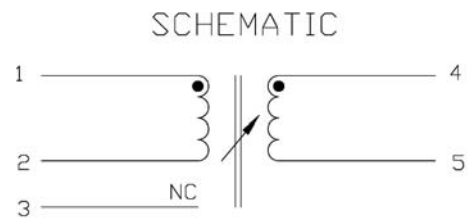
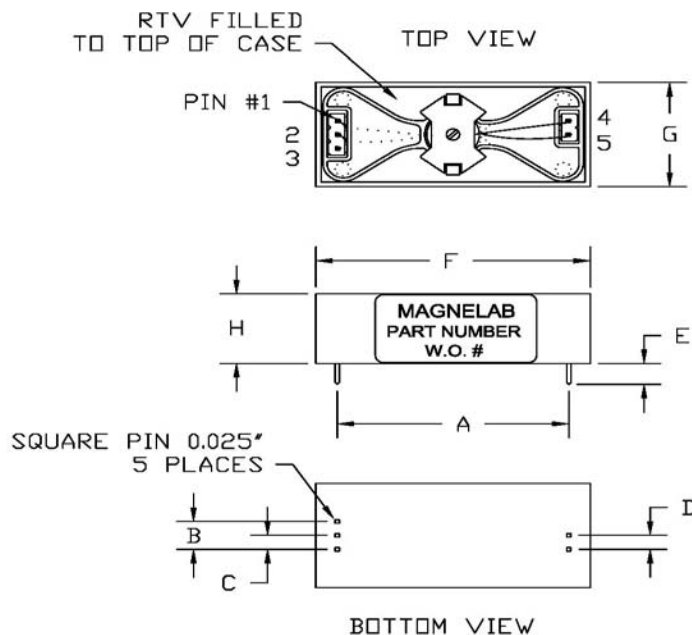
PC Mounted
 Fully Encapsulated Construction
 Keyed for Proper Installation

Features

UL and FDA Compatible

**ALL DIMENSIONS IN INCHES**

A	1.400"
B	0.200"
C	0.100"
D	0.100"
E	0.150"
F	1.660"
G	0.750"
H	0.500"



Phone: (303) 772-9100
 Fax: (303) 772-9400
 E-Mail: info@magnelab.com



**MAGNELAB
INCORPORATION**
 LONGMONT, COLORADO 80501

3996-003**High Isolation Signal transformer**

Provides high isolation for medical applications, including patient connect circuits

Electrical Specifications

Turns Ratio 1:1

Isolation Primary to Secondary 10,000 Vac

Frequency: >100KHz

Usable VA < 10

Inductance = 81.67uH - 86.72uH @ 80KHz

Mechanical Specifications

PC Mounted

Fully Encapsulated Construction

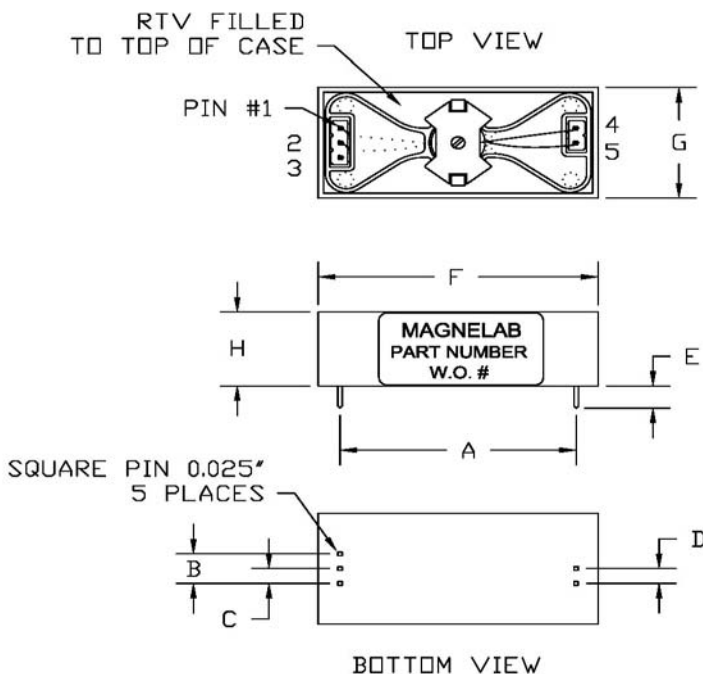
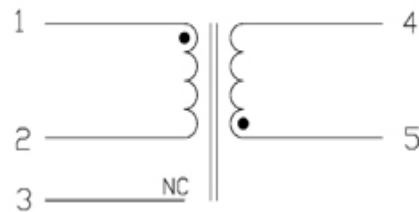
Keyed for Proper Installation

Features

UL and FDA Compatible

**ALL DIMENSIONS IN INCHES**

A	1.400"
B	0.200"
C	0.100"
D	0.100"
E	0.150"
F	1.660"
G	0.750"
H	0.500"

**SCHEMATIC**

Phone: (303) 772-9100
Fax: (303) 772-9400
E-Mail: info@magnelab.com



MAGNELAB
INCORPORATION
LONGMONT, COLORADO 80501

4806-002**Common Mode Choke****EMI, Common Mode and Differential noise filter****Electrical Specifications**

1 Amp Max Current

Frequency Range: 25MHz to 1GHz

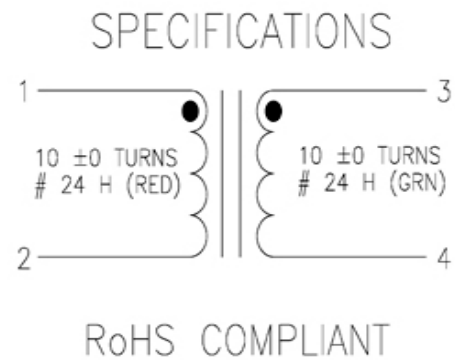
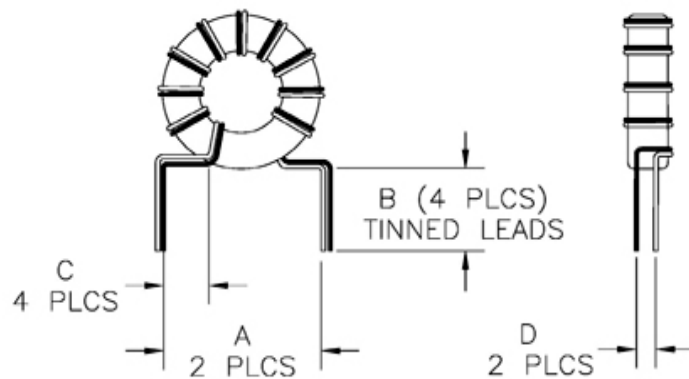
Mechanical Specifications

Self Leads, 0.022" Dia

Vertical Mount, easily formed to horizontal mount

**Features**Broadband High Performance Core
CE RoHS Compliant

ALL DIMENSIONS IN INCHES	
A	0.60"
B	0.40"
C	0.20"
D	0.15"



Phone: (303) 772-9100

Fax: (303) 772-9400

E-Mail: info@magnelab.com**MAGNELAB**
INCORPORATION
LONGMONT, COLORADO 80501

3931-001 Power Transformer, 240 Volt European Style

20 Watts, Specially Designed to Meet European VDE and TUV Regulatory Standards

Electrical Specifications

Input Voltage: 100/120/240Vac

Output #1: 8.1Vac @ 1.0A

Output #2: 16.1Vac @ 0.54A

Output #3: +/- 15.35Vac @ 0.15A

Frequency: 50-400Hz

Isolation Primary to Secondary 1,500 Vac

Shielded Primary Grounded to Core

Mechanical Specifications

Channel Frame, Chassis Mount

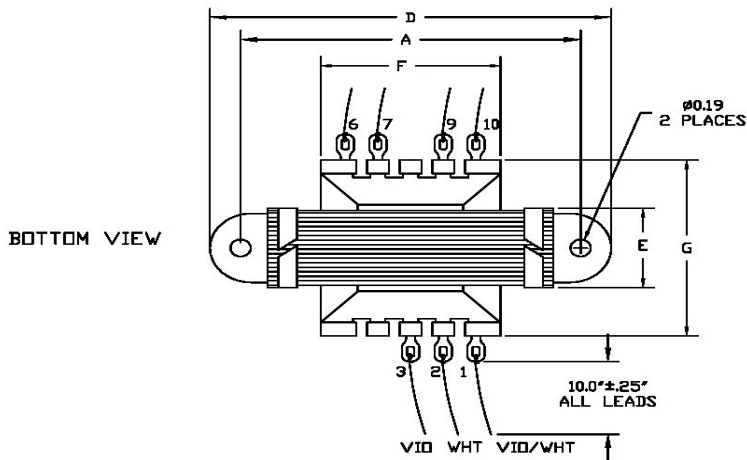
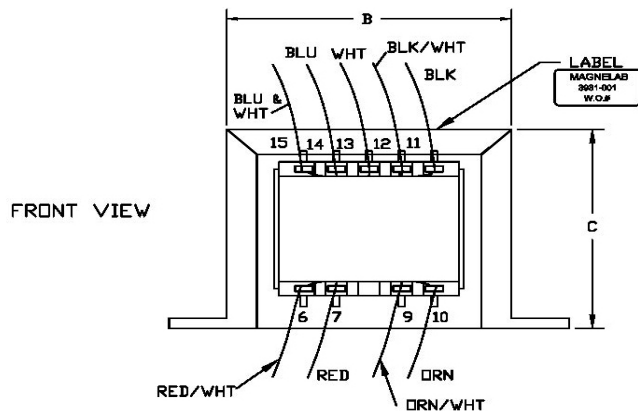
Flying Leads 10" +/-0.25" length, 18GA, UL1015

Fully Shrouded Bobbin

Features

UL, VDE and TUV Compatible

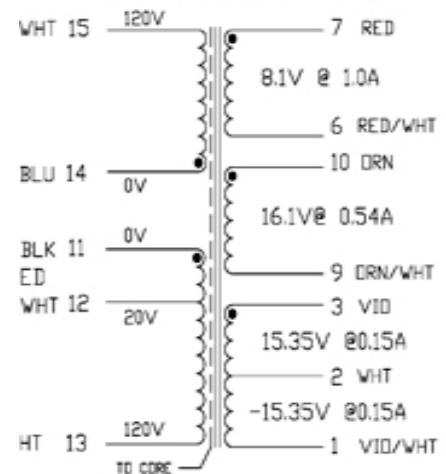
Varnish Impregnated to reduce noise and environmental effects



ALL DIMENSIONS IN INCHES

A	3.130"
B	2.70"
C	2.28"
D	3.70"
E	1.00"
F	1.73"
G	2.05"

SPECIFICATIONS



Phone: (303) 772-9100

Fax: (303) 772-9400

E-Mail: info@magnelab.com



MAGNELAB
INCORPORATION

LONGMONT, COLORADO 80501